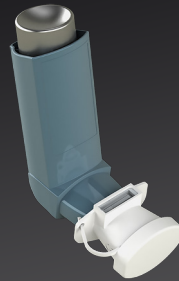


Peak Expiratory Flow



Inhaler Technique Training



Peak Inspiratory Flow



Spacer



Nebulisation



Oxygen Therapy



PRODUCT CATALOGUE

Clement Clarke International

Tradition and Innovation - Visionary thinking and a fascination with technology have guided us throughout our history to develop innovative products of outstanding reliability: Anticipating trends to improve the quality of life.

MEDICAL DEVICES

CLEMENT CLARKE INTERNATIONAL

'Gold standard' for the accuracy of peak flow measurement

Clement Clarke International has been a major force in the manufacturing of innovative medical instrumentation worldwide since its formation in 1917. As part of the Haag-Streit Group of companies for over 25 years, Clement Clarke has focused on developing the highest quality products to strengthen its portfolio.

Clement Clarke's expertise in peak flow monitoring has led to the development of strong brands, such as Mini-Wright, Airzone and In-Check. The Mini-Wright Standard is recognised in the industry as 'the gold standard' for the accuracy of peak flow measurement.

The Mini-Wright range is supported by over 200 published papers and exported to over 50 countries worldwide. The company's portfolio consists of medical devices which help to diagnose, monitor and treat the following respiratory diseases: asthma, COPD, cystic fibrosis, bronchiectasis, allergic rhinitis and emphysema.

Clement Clarke are currently in a powerful position to support medical professionals through the integration of innovation, precision engineering, information technology and service excellence. The company takes a strategic approach to innovative product development and is continually working to provide good quality, efficient and up-to-date medical devices that meet all current needs and requirements of today's professionals.

QUALITY ASSURANCE

Clement Clarke have been assessed and certified as meeting the requirements of ISO 13485, for the following activities: the design and manufacture of peak flow meters, nebulisers and nebuliser kits, and spirometers including their spacers and masks. Clement Clarke also fully meet the requirements of the Medical Device Directive 93/42/EEC. Such accreditations highlight the fundamentals of quality management systems that Clement Clarke have in place, which reflect the quality of standards across all products and services.

Contents

01. Peak Expiratory Flow	pg 3-8
Mini-Wright Standard	pg 5
eMini-Wright	pg 6
Mini-Wright AFS Low Range	pg 7
Airzone	pg 8
02. Inhaler Technique Training	pg 9-18
Trainhaler & Trainhaler CR	pg 11-12
Flo-Tone Trainer	pg 13
Flo-Tone CR Trainer	pg 14
Positive Whistle Mask	pg 15
Flo-Check	pg 16
In-Check M	pg 17
In-Check DIAL G16	pg 18
03. Peak Inspiratory Flow	pg 19-22
In-Check Nasal	pg 21
In-Check Oral	pg 22
04. Spacers	pg 23-28
Flo-Tone MDI	pg 25
DispozABLE Spacer	pg 26
A2A Spacer	pg 27
Able Spacer	pg 28
05. Nebulisation	pg 29-36
Airmed Travel-Air	pg 32
Airmed 1000	pg 33
MEDIX Econoneb	pg 34
MEDIX AC2000	pg 35
MEDIX Turboneb 2	pg 36
06. Oxygen Therapy	pg 37-44
Oxygen Tubing	pg 38
Micro-Neb III - Medication Chamber	pg 39
Aerosol Mask (System 3000)	pg 40
Combination Mask (Duo Mask)	pg 41
Medium Concentration (MC) Mask	pg 42
Venturi Masks - Fixed concentration without tubing (24%-60%)	pg 43
Venturi Masks - Fixed concentration with tubing (24%-60%)	pg 44
Technical Specification	pg 45-46



01. Peak Expiratory Flow





PIONEER OF THE FIRST PEAK FLOW METER

Clement Clarke International

Clement Clarke's flagship range of peak flow meters are the first choice for healthcare professionals when it comes to the measurement of peak expiratory flow. The first Mini-Wright was introduced in the 1970's as the far simpler and smaller successor to the Wright Peak Flow Meter. The Mini-Wright as a brand is recognised on a global scale. Each device is individually calibrated. If you're looking for quality, you're looking for a Mini-Wright.

Peak flow meters allow patients to monitor their asthma; Peak Expiratory Flow (PEF) is a measurement of how fast a patient can blow out. When a patient is well, PEF is higher; when the airways are narrow (as with asthma) PEF is lower. Recording and plotting PEF values facilitates diagnosis and management of asthma.

Accessories Available

Disposable One-Way Valve Mouthpieces - EXPIRATORY	5 x 20	3122062	
Disposable One-Way Valve Mouthpieces - EXPIRATORY	200	3122064	
Disposable One-Way Valve Mouthpieces - EXPIRATORY	500	3122066	
Paediatric Adaptor (For one-way valve)	20	3122120	
Universal Adult Mouthpiece	1	3103051	
Universal Adult Mouthpiece	15	3103095	
Universal Paediatric Mouthpiece	1	3104049	
Airzone Windmill Trainer	50	3104262	
Mini-Wright AFS Windmill Trainer	50	3104272	

Infection control when using multi-patient devices

Infection control has become a critical issue in healthcare. Clement Clarke offer a wide range of mouthpieces, designed to minimise cross infection between patients, making many devices safe for multi-patient use. All infection control products fit the entire Mini-Wright range and have no effect on readings.

Please note: A new mouthpiece should be used for each patient.

MINI-WRIGHT™ STANDARD

The 'Gold Standard' in asthma management

MINI-WRIGHT™ STANDARD

Product overview

The market-leading peak flow meter was pioneered by Clement Clarke International in the early 1970s; the Mini-Wright peak flow meter is known as the 'Gold Standard' in asthma management. The Mini-Wright Standard is lightweight and portable; peak flow measurements can be taken with ease and whilst on the go. Measuring PEF between 60-880 L/min, the Mini-Wright Standard is available with two different scales, colour coded for easy recognition; ATS scale (tested to the American Thoracic Society standard) and an EU scale (tested to the European standard).



SUMMARY

Product features and benefits

- Lightweight and portable
- Available with ATS and EU scales
- Individually calibrated for accuracy
- Easy to read scale
- Robust and proven design
- Simple to clean
- Wide range of consumables available to minimise cross infection

UTILITY

What is this product used for?

The Mini-Wright Standard is predominantly used for taking peak flow measurements and for asthma management.

ORDERING

Part codes

Mini-Wright Standard EU scale:	3103388
Mini-Wright Standard ATS scale:	3103085

eMINI-WRIGHT™

Keeping peak flow monitoring up-to-date



eMINI-WRIGHT™

Product overview

Peak flow monitoring is a recognised tool in asthma management. Keeping accurate manual peak flow records is sometimes difficult, the eMini-Wright brings peak flow monitoring up-to-date. The eMini-Wright is a small, discreet peak flow meter that accurately measures and stores peak flow data. The eMini-Wright reports if a peak flow effort is poor or a non-reproducible result is produced. There are two units available; the eMini-Wright unit, for screen review only and the eMini-Wright Download, which allows the data to be retrieved and downloaded to a PC.

SUMMARY

Product features and benefits

- Highly accurate peak flow measurements; conforms to international standards
- Stores 240 readings
- On-screen zoning system
- On-screen reporting of poor effort and non-reproducible results
- Downloadable software available free online
- Optional data cable

UTILITY

What is this product used for?

The eMini-Wright is for single patient serial peak flow measurement and data storage. On screen zoning system supports asthma management plan. A data cable enables download from the device to a PC, the software displays the data graphically and permits printing.

ORDERING

Part codes

eMini-Wright unit:	3210000
eMini-Wright download:	3210001



MINI-WRIGHT AFS™ LOW RANGE

Useful for patients with a lower peak flow

MINI-WRIGHT AFS™ LOW RANGE

Product overview

Having set the standard with the Mini-Wright Standard, the AFS Low Range peak flow meter provides the same level of accuracy and consistency to those patients with lower peak flow monitoring requirements. Particularly useful for very young children, the elderly and patients with severe air flow obstruction. The Mini-Wright AFS Low Range measures peak expiratory flow between 30-400 L/min.



Mini-Wright AFS™ Low Range with mouthpiece

SUMMARY

Product features and benefits

- Available with ATS and EU scales
- Useful for children, elderly and patients with severe air flow obstruction
- Individually calibrated for accuracy
- Incorporates Aerodynamic Flow System (AFS)
- Easy to read scale
- Simple to use
- Readings can be taken on the move
- Compact for portability
- Windmill incentive trainer available, useful for children

UTILITY

What is this product used for?

Particularly useful for patients who have a typically low peak flow reading. By reducing the range of the scale, this device enables readings to be more accurate for low readings in comparison to a scale on a larger peak flow meter.

ORDERING

Part codes

Mini-Wright AFS Low Range EU scale:	3104708
Mini-Wright AFS Low Range ATS scale:	3104050
Mini-Wright AFS Windmill Trainer (50):	3104272

AIRZONE™

Pocket sized peak flow meter, with zoning system

AIRZONE™

Product overview

This pocket sized peak flow meter is suitable for both adults and children, it features a special zoning system which allows safe and accurate self-management. The Airzone is individually calibrated to ensure accuracy and reliability, all at an affordable price. This portable peak flow meter includes a handle, for easy use. Available with both ATS and EU scales. The Airzone measures peak expiratory flow between 60-720 L/min ATS and 60-800 L/min EU.

SUMMARY

Product features and benefits

- Available with ATS and EU scales
- Suitable for adults and children
- Individually calibrated for accuracy
- Conforms to NAEP guidelines
- Lightweight and compact
- Handle attached for easy use
- Zoning system allows self-management
- Windmill incentive trainer available, useful for children

UTILITY

What is this product used for?

The Airzone is designed for patients on the move. A pocket sized peak flow meter with the same accuracy as a Mini-Wright Standard, with the additional functionality of a zoning system for easy self management.

ORDERING

Part codes

Airzone EU scale in a box:	3130160
Airzone EU scale in a poly bag:	3131001
Airzone ATS scale in a box:	3130119
Airzone Windmill Trainer (50):	3104262



Airzone™ with Windmill Trainer



02. Inhaler Technique Training

INNOVATIVE PRODUCT DEVELOPMENT

Misuse of inhalers is common

There have been many papers published detailing the misuse of dry powder (DPI) and pressurised metered dose inhalers (pMDIs) among patients. Clement Clarke have used their expertise to concentrate on this area and have introduced a number of new products. Each device is targeted at the training of inhalation technique, guiding patients to inhale at the correct flow rate for inhaler use.

Inhaler technique errors occur in the hands of patients and healthcare professionals. It has been determined that the majority of healthcare professionals cannot demonstrate correct inhaler use to their patients. It is not therefore surprising that patients are mostly unable to demonstrate good inhaler technique. The consequences are significant; patients take additional or higher strength doses to compensate for lack of efficacy from medication lost through poor technique, this results in poorer control, hospitalisation and increased healthcare costs.

Accessories Available

Disposable One-Way Valve Mouthpieces - INSPIRATORY	5x20	3122061
Disposable One-Way Valve Mouthpieces - INSPIRATORY	200	3122063
Disposable One-Way Valve Mouthpieces - INSPIRATORY	500	3122065
Paediatric Adaptor (For one-way valve)	20	3122120
Universal Adult Mouthpiece	1	3103051
Universal Adult Mouthpiece	15	3103095



Infection control when using multi-patient devices

Infection control has become a critical issue in healthcare. Clement Clarke offer a wide range of mouthpieces, designed to minimise cross infection between patients, making many devices safe for multi-patient use. All infection control products fit the entire In-check range and have no effect on readings.

Please note: A new mouthpiece should be used for each patient.

TRAINHALER® & TRAINHALER® CR - PMDI TRAINING SYSTEM

To be used with Flo-Tone™ and Flo-Tone™ CR attachment as a training aid; instead of a placebo inhaler

PMDI TRAINING SYSTEM

Product overview

Trainhaler is the first simple pMDI training system to provide flow and co-ordination coaching. It is a placebo-like pMDI training device which, with the Flo-Tone attached is an essential tool for healthcare professionals to teach inhaler technique. The Trainhaler is suitable for multi-patient use by changing the Flo-Tone for each individual patient. A whistle is heard when the patient is inhaling correctly. The start of the whistle sound is the signal to press the canister. The whistle should be maintained for 5 seconds if possible. This ensures the patient is inhaling gently and at the correct flow rate.



TRAINHALER® PMDI TRAINING SYSTEM

Product overview

The Trainhaler and Trainhaler CR are essentially the same product, the difference being the Flo-Tone attachment. The regular Flo-Tone can be progressed on to being used with a patient's inhaler, as can the Flo-Tone CR. The Flo-Tone CR has the addition of the controlled resistance; this means the whistle will signal irrespective of the inhaler it is connected to. For specific information of the features of the Flo-Tone and Flo-Tone CR, please refer to the appropriate product pages.

SUMMARY

Product features and benefits

- Contains no medication
- For multi-patient use, can be cleaned easily
- Flow rate guidance with Flo-Tone/Flo-Tone CR attachment
- Actuation indicator for easy co-ordination when Flo-Tone/Flo-Tone CR is attached
- Low-cost inhaler technique trainer
- Teaches correct flow rate
- Simple non-electronic training device, can be used anywhere

UTILITY

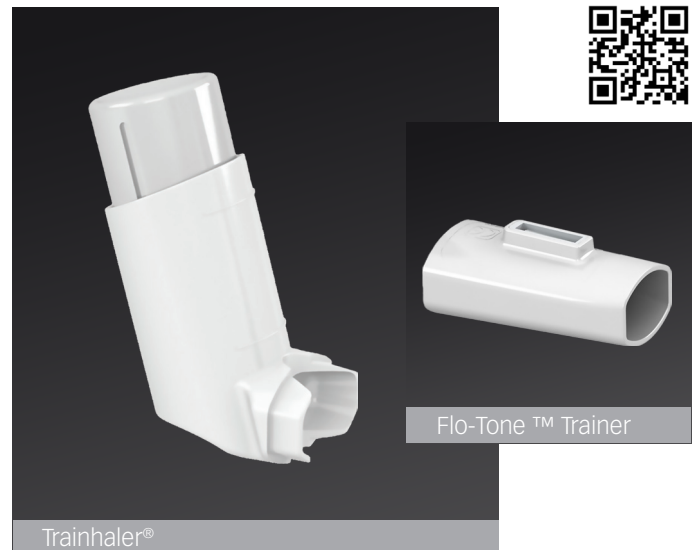
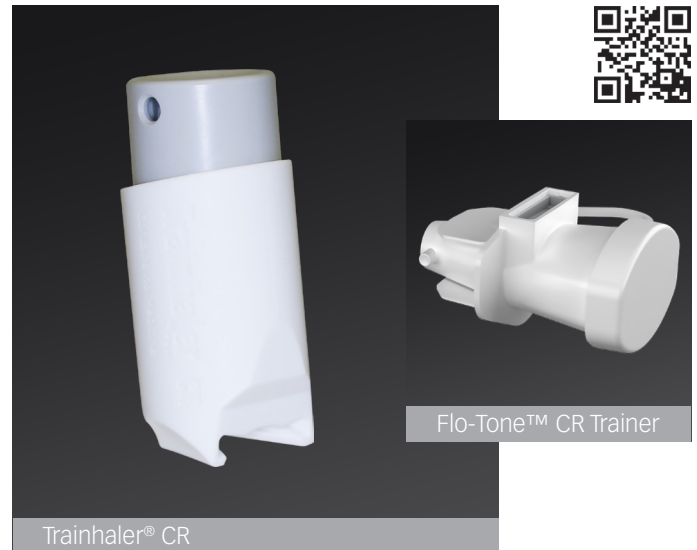
What is this product used for?

Trainhaler and Trainhaler CR are both pMDI training systems, to be used with Flo-Tone/Flo-Tone CR as an attachment; once combined this innovative training system teaches correct pMDI technique.

ORDERING

Part codes

Trainhaler (white) + Flo-Tone Trainer (pack of 1 each)	3152070
Trainhaler (red) + 8 Flo-Tone Trainers	3152071
Trainhaler (blue) + 8 Flo-Tone Trainers	3152075
Flo-Tone Trainer Regular (pack of 10)	3152002
Trainhaler CR with Flo-Tone CR (pack of 1 each)	3152083
Trainhaler CR with 8 Flo-Tone CR (pack of 1 + 8)	3152084
Flo-Tone CR (pack of 10)	3152011



FLO-TONE™ TRAINER

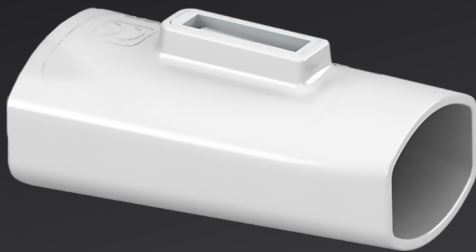
pMDI training aid; also Trainhaler® attachment



FLO-TONE™ TRAINER

Product overview

The Flo-Tone Trainer is a training device that makes it easier for healthcare professionals to help patients achieve the correct flow rate and master inhale/actuate co-ordination. pMDIs are widely used inhalers, yet most patients do not use them correctly. Many inhale too rapidly, some cannot co-ordinate inhalation and actuation easily.



SUMMARY

Product features and benefits

- For use with placebo pMDI training inhalers
- Patients learn to inhale at the correct flow rate
- Patients learn to maintain inhalation post-actuation, to convey medication to lungs
- Inhaler training can be conducted effectively
- Whistle provides a clear positive signal to actuate
- Low-cost, simple yet effective method of inhaler technique training
- Fits many pMDIs

UTILITY

What is this product used for?

The Flo-Tone Trainer is designed to be used by healthcare professionals to coach patients, helping them to improve their inhaler technique. The whistle sounds once correct flow rate has been achieved.

ORDERING

Part codes

Flo-Tone Trainer Regular (pack of 10)	3152002
Flo-Tone Trainer Circular (pack of 10)	3152005

FLO-TONE™ CR TRAINER**pMDI training aid; also Trainhaler® CR attachment**

FLO-TONE™ CR TRAINER

Product overview

Flo-Tone CR is the NEW and improved version of the Flo-Tone. The Flo-Tone CR has been carefully engineered to achieve additional functionality; firstly being able to fit most pMDIs, secondly ensuring that the guidance whistle will respond at the same flow rate in all pMDIs, irrespective of their individual resistance.

SUMMARY

Product features and benefits

- For use with placebo and active pMDIs
- Guides the patient to correct pMDI use (flow rate, co-ordination and duration)
- Inhaler training can be conducted effectively
- Fits most pMDIs
- Built-in controlled resistance (CR) removes variability of the pMDIs internal resistance
- Training tool; for use with a placebo pMDI or as an attachment to the Trainhaler CR
- Incorporates tethered mouthpiece cap

UTILITY

What is this product used for?

Flo-Tone CR Trainer is to be used as a training aid with a placebo inhaler, or as an attachment to the Trainhaler CR. The device assists in the training of inhaler use, in addition to being used as a spacer device; for improved drug delivery.

For use of Flo-Tone CR as a Mini-Spacer see page 25.

ORDERING

Part codes

Flo-Tone CR Trainer (pack of 10)

3152011



POSITIVE WHISTLE MASK

To be used with Able Spacer™

POSITIVE WHISTLE MASK

Product overview

Able Spacer (Small Mask variant) is now available with the New Positive Whistle Mask, this guides drug delivery and works with the Rafi-Tone Lite App. The whistle will not sound if the mask does not fit the face properly, and this makes it easy to confirm correct fitting. The Rafi-Tone Lite App can be downloaded free from either the App Store or Google Play. The Rafi-Tone App works with the whistle tone as an incentive tool for children to have fun with while learning to accept the use of their spacer. Each time the whistle sounds the game moves on.



Positive Whistle mask

SUMMARY

Product features and benefits

- Confirms correct fit
- Encourages correct flow rate
- Encourages child acceptance of face mask
- Rafi-Tone Lite App is available as a free download
- Inhibits microbial growth
- Low-static properties
- Flared edges to minimise drug retention

UTILITY

What is this product used for?

To be used with the Able Spacer; to facilitate child encouragement, helping to confirm correct flow rate, with the option of playing the Rafi-Tone game, for encouragement purposes.

ORDERING

Part codes

Able Spacer with small mask (boxed)	3609121
Whistle Mask (pack of 1)	TBA
Mask Adaptor (pack of 1)	TBA

FLO-CHECK

Stops the risk of over-medicating whilst training

FLO-CHECK

Product overview

The Flo-Check is a pMDI disposable occlusion mouthpiece that permits patient inhaler technique training without risk of cross-infection from placebo or active pMDIs and stops the risk of over-dosing on medication.

SUMMARY

Product features and benefits

- Facilitates visual assessment of pMDI technique
- Facilitates multi-patient use of placebo pMDI without risk of cross infection
- Fits most pMDI shapes
- Single use - disposable
- Resistance matched to standard pMDI
- Low cost simple solution

UTILITY

What is this product used for?

Inhaler technique training can be conducted with ease, from patient to patient using the same inhaler or placebo inhaler, without any risk of cross-infection. Flo-Check provides healthcare professionals with a low cost option when training patients, teaching them to use their inhalers correctly or reviewing their current inhaler.

ORDERING

Part codes

Flo-Check (x 10):	3152350
Flo-Check (x 10) with Trainhaler CR:	3152351



Flo-Check with placebo inhaler

IN-CHECK™ M

Inhalation airflow meter

IN-CHECK™ M

Product overview

The In-check M is an inhalation airflow meter that can help educate and assess patients who use a pMDI device. Pressurised inhaler devices are designed to deliver medication to the respiratory tract. The speed of inhalation through them (the inspiratory flow) can have significant effect on the quantity of drug delivered and the clinical efficacy of the product. In-check M has been developed from the product In-check DIAL, the device is specific to pMDI use and simulates the pMDI format only. The In-check M measures inspiratory flow between 15 -120 L/min.



In-check™ M with disposable one-way valve mouthpiece

SUMMARY

Product features and benefits

- Individually calibrated for absolute accuracy
- Easy to clean by simple washing
- pMDI specific; suitable for inhaler technique training
- Use with one-way valve mouthpiece to minimise cross infection
- Describes correct technique for pMDI and clinically effective range

UTILITY

What is this product used for?

The In-check M is used for pMDI inhaler technique training; patients can be coached by healthcare professionals to achieve appropriate inhalation airflow.

ORDERING

Part codes

In-check M:

3109831

IN-CHECK™ DIAL G16

Coaching patients to achieve correct inhaler technique



IN-CHECK™ DIAL G16

Product overview

The In-check DIAL has been revised, now grouping inhalers as a function of their internal airflow resistance, in order to accommodate information on an increasing number of new devices. There are six resistance groups, five of which relate to dry powder inhalers (DPIs) the other to pressurised metered dose inhalers (pMDIs). A guide to identify the resistance group for each inhaler is provided on the In-check DIAL G16 and in the associated guide. The In-check DIAL G16 can still be used to measure a specific flow rate of a particular inhaler through the use of a specific restrictive adapter.

SUMMARY

Product features and benefits

- Groups inhalers as a function of their internal airflow resistance, accommodating new inhaler devices
- Individually calibrated for accuracy
- Easy to clean, by simple washing
- To coach DPI or pMDI inhaler technique
- Patients learn to inhale at the correct flow rate
- Inhaler training can be conducted quickly
- Low-cost, simple yet effective method of inhaler technique training
- Use with one-way valve mouthpiece to minimise cross infection

UTILITY

What is this product used for?

Many patients do not use their inhalers correctly, often failing to inhale at the correct flow rate. Good inhaler use depends on inspiratory flow in an important way. In-check DIAL G16 enables the healthcare professional to coach their patients on how to use their inhaler correctly.

ORDERING

Part codes

In-check DIAL G16:

3109300



In-check™ DIAL G16 with disposable one-way valve mouthpiece



03. Peak Inspiratory Flow

INSPIRATORY FLOW

Airflow measurement

The In-Check Oral/Nasal hand-held inspiratory flow meter is a direct result of Clement Clarke's experience in measuring airflow. Clement Clarke are continually working with clinicians to improve their application of simple inspiratory flow measurements, for the appropriate selection and efficient use of inhalers; the measurement of inspiratory capability in COPD patients and in the area of inhaler technique training.

Accessories Available

Disposable One-Way Valve Mouthpieces - INSPIRATORY	5x20	3122061
Disposable One-Way Valve Mouthpieces - INSPIRATORY	200	3122063
Disposable One-Way Valve Mouthpieces - INSPIRATORY	500	3122065
Paediatric Adaptor (For one-way valve)	20	3122120
Universal Adult Mouthpiece	1	3103051
Universal Adult Mouthpiece	15	3103095



Infection control when using multi-patient devices

Infection control has become a critical issue in healthcare. Clement Clarke offer a wide range of mouthpieces, designed to minimise cross infection between patients, making many devices safe for multi-patient use. All infection control products fit the entire In-check range and have no effect on readings.

Please note: A new mouthpiece should be used for each patient.

IN-CHECK™ NASAL

Measuring inspiratory flow through the nasal passage

IN-CHECK™ NASAL

Product overview

The In-check Nasal is a portable inspiratory flow meter, which measures the changes in lung function. The device measures inspiratory flow through the nose between 30-370 L/min. This product enables the physician to judge the degree of obstruction and helps assess the benefits of therapeutic intervention, by providing an objective assessment of nasal airway patency.



In-Check™ Nasal with face mask

SUMMARY

Product features and benefits

- Measures inspiratory flow through the nose
- Accurate assessment of nasal congestion
- Individually calibrated to ensure accuracy
- Lightweight and easy to use
- Portable
- Can be used during assessment of allergic rhinitis

UTILITY

What is this product used for?

The In-check Nasal is a simple device that measures nasal passage obstruction and offers an inexpensive alternative to Rhinomanometry.

ORDERING

Part codes

In-check Nasal with medium mask:	3109751
Small mask (1):	3109756
Medium mask (1):	3109753

IN-CHECK™ ORAL

Inspiratory flow meter, measuring lung function changes

IN-CHECK™ ORAL

Product overview

The In-check Oral is a portable inspiratory flow meter, which measures the changes in lung function. The device measures inspiratory flow through the mouth between 30-370 L/min. This product enables the physician to judge the degree of obstruction and helps assess the benefits of therapeutic intervention, by providing an objective assessment of nasal airway patency. One-way valve mouthpieces are available to help minimise cross infection.

SUMMARY

Product features and benefits

- Measures inspiratory flow through the mouth
- Suitable tool for screening COPD
- Individually calibrated for absolute accuracy
- Lightweight and easy to use

UTILITY

What is this product used for?

Inspiratory flow is considered by a number of physicians to be a sensitive marker for bronchodilator efficacy screening in COPD.

ORDERING

Part codes

In-check Oral:	3109750
In-check Inhaler Assessment Kit:	3109760



In-Check™ Oral with mouthpiece



04. Spacers





IMPROVING DELIVERY AND REDUCING THROAT DEPOSITION

Valved Holding Chambers (VHC)

Spacers are designed to facilitate the delivery of pressurised Metered Dose Inhalers (pMDIs) by eliminating the need for co-ordination, thus improving delivery and reducing throat deposition. Such devices are particularly useful for:

- Patients with poor inhalation technique
- Children
- Sufferers of nocturnal asthma
- Patients prone to develop candidiasis (oral thrush)

Model Comparison

	Trainer	Emergency application	Long term application	
	Flo-Tone™ MDI	DispozABLE™	A2A™	Able Spacer™
				
Features				
Collapsible	x	x	✓	x
Whistle	✓	x	x	x
Whistle can be attached	x	✓	✓	✓
Material				
Anti-microbial	x	x	✓	✓
Low-static properties	x	✓	✓	✓

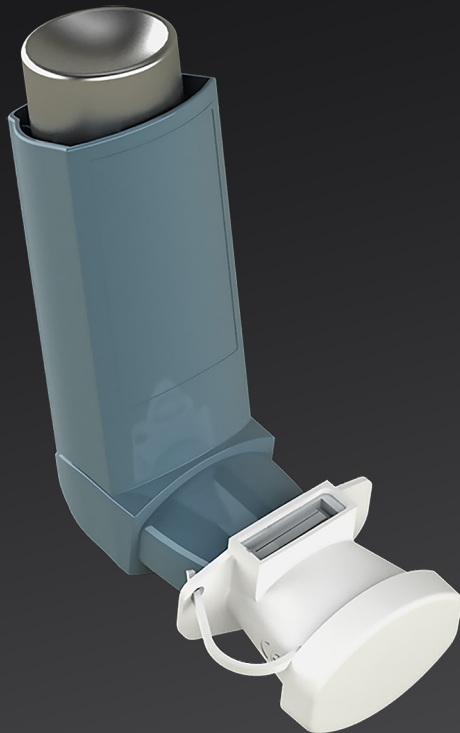
FLO-TONE™ MDI

Mini-spacer, signals correct pMDI flow rate

FLO-TONE™ MDI SPACER

Product overview

The Flo-Tone MDI extends the possibilities of Flo-Tone CR TRAINER by providing initial training guidance, on-going training and by acting as a mini-spacer, reducing unwanted oro-pharyngeal deposition. With Flo-Tone CR attached to the pMDI, the patient's gentle inhalation causes a whistle to sound. This is the signal to actuate the inhaler. As the patient maintains the whistle the medication is drawn deep into the lungs. Flo-Tone MDI is to be used with an active drug.



SUMMARY

Product features and benefits

- Guides the patient to correct pMDI use (flow rate, co-ordination and duration)
- Improves inhaler technique
- Fits most pMDIs
- Built-in controlled resistance (CR) removes variability of the pMDIs internal resistance
- Delivers full lung dose and reduces throat impact
- Can be used as a mini-spacer; pMDI attachment
- Helps reinforce inhaler training
- Incorporates tethered mouthpiece cap

UTILITY

What is this product used for?

Flo-Tone MDI is designed to be used by the patient, together with their inhaler; helping them to improve their inhaler technique. Also, acting as a mini-spacer, reducing unwanted oro-pharyngeal deposition.

ORDERING

Part codes

Flo-Tone MDI (pack of 2)

3152001

DISPOZABLE™ SPACER**Low cost, fast response spacer**

DISPOZABLE™ SPACER

Product overview

DispozABLE Spacer has been designed to meet a specific market need. It is a low cost, fast response spacer for delivering medication promptly. It is designed to be used straight from the box without pre-washing in an emergency situation, for example in an ambulance or school. DispozABLE Spacer is a single use spacer, it's simple intuitive design allows non-professionals to assemble it quickly. Clear pictorial instructions are displayed on the spacer, adding to the element of ease.

SUMMARY

Product features and benefits

- Simple to use
- Effective
- For use in an emergency situation; ambulance or school
- Suitable for reversibility testing
- No mask required
- Can be used with tidal breathing technique, assisted by Flo-Tone
- Suitable for children and adults

UTILITY

What is this product used for?

Emergency use spacer, designed to be used with ease, by non-professionals. Instructions are displayed on the spacer.

ORDERING

Part codes

DispozABLE Spacer (box of 10):

3609550



A2A™ SPACER

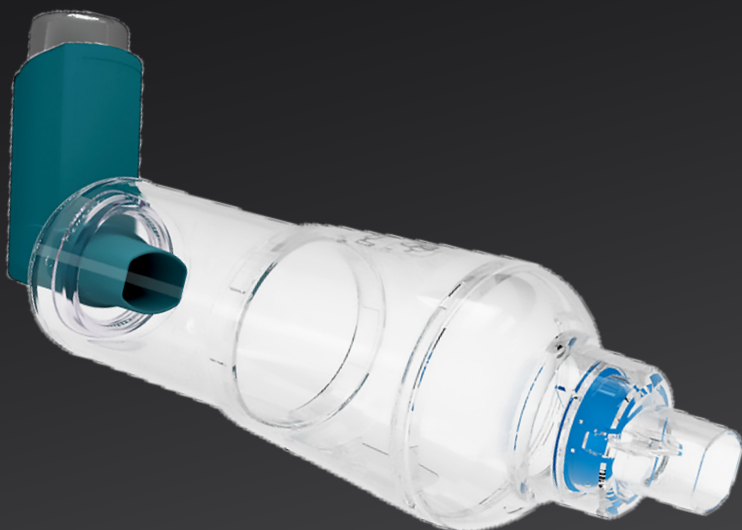
Collapsible, anti-microbial spacer



A2A™ SPACER

Product overview

A2A Spacer is a collapsible valved holding chamber, which is pocket-sized when collapsed for improved portability. A2A is made from anti-microbial, low-static, transparent plastic for improved hygiene. The device's plume shaped chamber of 210ml helps to minimise drug loss within the spacer. A2A Spacer has been designed with a visible valve movement to help parents or carers observe and confirm correct inhalation to overcome inhalation/actuation problems.



SUMMARY

Product features and benefits

- Collapsible, pocket sized valved holding chamber
- Inhibits microbial growth
- Visible valve movement
- Low-static properties
- Accepts all pMDIs available
- 210ml, consistent with optimal performance
- Easy to clean
- Embossed graphical instructions
- Available with or without mask
- Suitable for both children and adults
- Supplied in an anti-static protective bag

UTILITY

What is this product used for?

A2A Spacer is designed to help deliver medication from a pressurised metered dose inhaler (pMDI) to the lungs, by improving co-ordination and medication deposition.

ORDERING

Part codes

A2A Spacer (boxed):	3607104
A2A Spacer with small mask (boxed):	3607105
A2A Spacer with medium mask (boxed):	3607106
Small mask (pack of 1):	3609150
Medium mask (pack of 1):	3609151

ABLE SPACER™**Anti-microbial spacer, with low-static properties**

ABLE SPACER™

Product overview

Able Spacer is a popular valved holding chamber that facilitates the use of pMDI medication. This improved version of Able Spacer is now manufactured in the UK, from transparent plastic which incorporates anti-microbial silver ion technology, which provides improved protection from contamination and inhibits microbial growth. The visible valve movement makes it easier for parents or carers to observe and confirm correct inhalation and actuation.

SUMMARY

Product features and benefits

- Inhibits microbial growth
- Visible valve movement
- Low-static properties
- Accepts all pMDIs available
- 210ml, consistent with optimal performance
- Easy to clean
- Embossed graphical instructions
- Available with or without mask
- Suitable for both children and adults
- Supplied in an anti-static protective bag

UTILITY

What is this product used for?

Able Spacer is designed to help patients with poor inhaler co-ordination. Able Spacer can be used with the new Positive Whistle Mask, which enables the use of the Rafi-Tone Lite app. Please refer to page 15 for further information.

ORDERING

Part codes

Able Spacer (boxed):	3609120
Able Spacer with small mask (boxed):	3609133
Able Spacer with medium mask (boxed):	3609122
Able Spacer with large mask (boxed):	3609123
Small mask (pack of 1):	3609150
Medium mask (pack of 1):	3609151
Large mask (pack of 1):	3609152
Small mask (box of 50):	3607125
Medium mask (box of 50):	3607126



Able Spacer™ with pMDI



05. Nebulisation

NEBULISERS FOR ALL PURPOSES

The power to deliver

When a condition such as asthma or COPD cannot be controlled by the use of metered dose inhalers (pMDIs), dry powder inhalers (DPIs) or when a large dose of medication is needed, the patient may require a nebuliser. Nebulisation is the main method of administering antibiotics in aerosol form. By combining the quality of the Lifecare Micro-Neb III medication chamber, with the reliability and performance of a Medix nebuliser, Clement Clarke can offer a customised solution for all patients requiring inhaled drug therapy.

Accessories Available

Year Packs

Adult Year Pack (Econoneb, Turboneb 2)	1	L3605122
Paed Year Pack (Econoneb, Turboneb 2)	1	L3605123
Adult Year Pack AC2000	1	L3605125
Paed Year Pack AC2000	1	L3605124
Airmed 1000 Adult Year Pack	1	3605542
Airmed 1000 Paediatric Year Pack	1	3605543
Airmed Travel-Air Adult Year Pack	1	3605545
Airmed Travel-Air Paediatric Year Pack	1	3605544








Each Year Pack contains: 4 x Medication Chambers, 4 x Face Masks (Adult or Child), 4 x Drivelines, 1 x Mouthpiece, 1 x Outlet Filter* and 4 x Inlet Filters (*Not included in Airmed Year Packs).

MEDICATION CHAMBER

Micro-Neb III

When respirable output is of prime importance, the Micro-Neb III is the answer. This medication chamber has been shown to consistently perform well in comparative studies. Suitable for use with bronchodilators, inhaled steroids and antibiotics. The Micro-Neb III features an anti-spill design, as well as a self-aligning construction for the control of six critical dimensions, which ensures optimum particle size and output performance. The Micro-Neb III is available on its own, as a 'Kit' with a face mask, mouthpiece or angled mask connector to fit the Duo Mask. The paediatric version of the Micro-Neb III medication chamber features bright colours to engage the child's attention and to reduce the fear of a frightening medical device.

Model Comparison

	Travel-Air	1000	Econoneb	AC2000	Turboneb 2
					
Power supply					
Battery operated	✓	x	x	x	x
Mains powered	✓	✓	✓	✓	✓
Nebuliser performance					
Typical dynamic flow and pressure*	5-6.7 L/min 8-10 psi	4-8 L/min 10-16 psi	7-9 L/min @138 kPa	7-9 L/min @138 kPa	9.5-10.5 L/min @138 kPa
Aerosol output rate (ml per min)	0.20ml	0.20ml	0.39ml	0.38ml	0.46ml
Particle size (MMAD)	4µ	4µ	3.4µ	3.4µ	3.2µ
Product suitability					
Hospital	x	x	✓	x	✓
Clinic	x	✓	✓	✓	✓
Home	✓	✓	x	✓	x
Travel	✓	x	x	x	x
Brand name					
MEDIX/Airmed	Airmed	Airmed	MEDIX	MEDIX	MEDIX
Intended use					
Light/Medium/Heavy	Light	Medium	Heavy	Heavy	Heavy

*MicroNeb ultrasonic frequency: Approx. 180 KHZ

AIRMED TRAVEL-AIR**Low cost, portable, compact compressor nebuliser**

AIRMED TRAVEL-AIR

Product overview

Low cost option for a portable compact compressor nebuliser, designed to efficiently deliver prescribed medication to the bronchial lung passages. Travel Air's lightweight design makes it ideal for portable use. The device is supplied complete with a starter pack, an AC adapter, a rechargeable battery and a travel bag.

SUMMARY

Product features and benefits

- Can be used worldwide
- Compact and lightweight
- Simple one button operation
- Portable hand-held compressor
- Rechargeable battery for mobile use; included
- Travel bag included
- Comes complete with a starter pack and universal AC adapter, ready for immediate use

UTILITY

What is this product used for?

- Nebulisation of medication for asthma and other respiratory conditions
- Suitable for patients of all ages
- Effective therapy for drug delivery

ORDERING

Part codes

Airmed Travel-Air (UK plug):	3605902
Airmed Travel-Air (EU plug):	3605903
Car adapter:	3605918
Spare rechargeable battery:	3605917

Includes a 2 year guarantee

Airmed Travel-Air with mouthpiece - comes with a Starter Pack

AIRMED 1000

Low cost option for a powerful compressor nebuliser

AIRMED 1000

Product overview

A low cost option for a powerful compressor nebuliser, designed to efficiently deliver prescribed medication to the bronchial lung passages. Most suitable use is in a home environment.

Includes a 2 year guarantee



SUMMARY

Product features and benefits

- Remains cool during constant use
- Compact and lightweight
- Reliable performance
- Easy carrying handle
- Comes complete with a starter pack, ready for immediate use

UTILITY

What is this product used for?

- Nebulisation of medication for asthma and other respiratory conditions
- Suitable for patients of all ages
- Effective therapy for drug delivery

ORDERING

Part codes

Airmed 1000 (UK plug):	3605900
Airmed 1000 (EU plug):	3605901
Travel bag:	3605913

MEDIX ECONONEB**Continuously rated compressor nebuliser**

ECONONEB

Product overview

Continuously rated, making the Econoneb a cool running compressor nebuliser for demanding use. A reliable unit that is ideal for meeting the challenges of both hospital and clinic. The Econoneb has a high flow rate which is suitable for nebulising bronchodilators (relievers), corticosteroids (preventers) and antibiotics. The Econoneb comes complete with a starter pack, ready for immediate use.

SUMMARY

Product features and benefits

- Reliable performance
- Compact design makes it easy to clean
- Tube holding design provides a convenient temporary holder for the nebuliser kit
- Easy to carry; the integrated handle and lightweight design allows easy carrying and good portability
- High flow rate
- Continuously rated
- Comes complete with a starter pack, ready for immediate use

UTILITY

What is this product used for?

- Nebulisation of medication for asthma, COPD and cystic fibrosis
- Suitable for patients of all ages
- Fast and effective therapy for drug delivery

ORDERING

Part codes

Econoneb (UK plug):	3605040HW
Econoneb (EU plug):	3605042HWEU

Includes a 3 year guarantee

Econoneb with mouthpiece - comes with a Starter Pack

MEDIX AC2000

Suitable for clinic or home use

AC2000

Product overview

This reliable compressor nebuliser offers a high flow solution that is suitable for nebulising all commonly prescribed medications for chronic and acute chest conditions. Continuously rated and designed with a storage compartment for drugs, mask and accessories. This Medix model is easy to use making it an ideal home compressor nebuliser for young children and the elderly. Comes complete with a starter pack.

Includes a 3 year guarantee



AC2000 - Comes with a Starter Pack

SUMMARY

Product features and benefits

- Ensures fast and efficient delivery of bronchodilators, corticosteroids and antibiotics
- Comes complete with a starter pack, ready for immediate use
- Discreet storage compartment allows all accessories and cable to be stored neatly
- Reliable and easy to use
- Easy carrying handle
- Continuously rated
- Shoulder bag available

UTILITY

What is this product used for?

- Nebulisation of medication for asthma, COPD and cystic fibrosis
- Suitable for patients of all ages
- Fast and effective therapy for drug delivery

ORDERING

Part codes

AC2000 (UK plug):

3605020HWA

AC2000 (EU plug):

3605022HWEU

Shoulder bag:

3607691

MEDIX TURBONEB 2**Highest flow rate; suitable for CF patients**

TURBONEB 2

Product overview

The Turboneb 2 has the highest flow rate of all of the Clement Clarke Compressors; ensuring fast and efficient drug delivery. It is continuously rated, making it a cool running compressor nebuliser for demanding use, such as in a multi-patient ward environment. The Turboneb 2 offers a customised solution for all patients requiring inhaled drug therapy.

SUMMARY

Product features and benefits

- Ideal for CF patients
- Continuously rated
- Remains cool during constant use
- Powerful compressor nebuliser
- Reliable and easy to use
- Easy carrying handle

UTILITY

What is this product used for?

- Continuous use
- Nebulisation of medication for asthma, COPD and cystic fibrosis
- Suitable for patients of all ages

ORDERING

Part codes

Turboneb 2 (UK plug):

3605050HW

Turboneb 2 (EU plug):

3605052HWEU

Includes a 3 year guarantee

Turboneb 2 with face mask - Starter Pack not included



06. Oxygen Therapy

LIFECARE™

Oxygen therapy solutions

Lifecare oxygen therapy products provide maximum comfort and unsurpassed performance. Clement Clarke's programme of continuous improvement and strict manufacturing standards ensure the highest level of quality and guarantee compliance to the medical device directive.

Oxygen concentration varies with changes of tidal volume, breathing rate and variance in the input level of oxygen; while fixed devices provide accurate known levels of oxygen stable over a wide range of input oxygen supplies.

Due to the vital importance of proper administration of oxygen, in all areas of hospital and the community, customised training is an integral part of the Lifecare oxygen therapy solution. Inappropriate use of O₂ can be fatal.

OXYGEN TUBING

Anti-Crush

OXYGEN TUBING

Product overview

Oxygen Tubing is a safe, anti-crush, high-pressure tube suitable for all oxygen and nebulisation therapy.

ORDERING

Part codes

Corrugated 22mm tubing,
cuffed at 30cm in a 50m coil:

L5000



MICRO-NEB III - MEDICATION CHAMBER

Consistently out performs all alternative nebulisers

MICRO-NEB III - MEDICATION CHAMBER

Product overview

Nebulisers are used when the condition cannot be controlled by metered dose inhalers and dry powder inhalers, or if a large drug dose is required (2.5ml of nebuliser solution is equivalent to 25 puffs of an MDI). The Micro-Neb III nebuliser consistently out performs all alternative nebulisers and is suitable for use with bronchodilators, inhaled steroids and antibiotics. The Micro-Neb III has an anti-spill design and is also available with an angled mask connector or mouthpiece.



ORDERING

Part codes

Adult nebuliser kit with mask and tubing (25):	L6003
Paed nebuliser kit with mask and tubing (25):	L6004
Adult mouthpiece kit and tubing (25):	L6005
Micro-Neb III nebuliser (50):	L6006
Micro-Neb nebuliser mouthpiece (50):	L6008
Micro-Neb inline adaptor kit with mouthpiece:	L6009
Inline 'T' piece with 22mm tubing (25):	L6010
Paed mouthpiece kit with tubing (25):	L6011
Adult Mask year pack (4):	L6120
Paed Mask year pack (4):	L6121
Mouthpiece year pack (4):	L6122

AEROSOL MASK (SYSTEM 3000)**Versatile solution to all oxygen therapy**

AEROSOL MASK (SYSTEM 3000)

Product overview

Aerosol Masks offer a versatile solution to all oxygen therapy and nebulisation support needs of a hospital, a clinic or an ambulance. One mask can be ordered and stocked in combination with several different accessories to satisfy requirements for Aerosol, Venturi and Nebuliser Masks in both adult and paediatric designs.

ORDERING

Part codes

Adult Aerosol mask (50):	L3000
Paed Aerosol mask (50):	L3002
Corrugated 22mm tubing in 50m coil (25):	L5000
Blue Venturi Reservoir tubing (50):	L4002/24%
White Venturi Reservoir tubing (50):	L4002/28%
Orange Venturi Reservoir tubing (50):	L4002/31%
Yellow Venturi Reservoir tubing (50):	L4002/35%
Red Venturi Reservoir tubing (50):	L4002/40%
Green Venturi Reservoir tubing (50):	L4002/60%
Blue Venturi Jet (50):	L4102/24%
White Venturi Jet (50):	L4102/28%
Orange Venturi Jet (50):	L4102/31%
Yellow Venturi Jet (50):	L4102/35%
Red Venturi Jet (50):	L4102/40%
Green Venturi Jet (50):	L4102/60%
Micro-Neb III Nebuliser (50):	L6006



COMBINATION MASK (DUO MASK)

Eliminates the need to stock multiple masks

COMBINATION MASK (DUO MASK)

Product overview

The Combination Mask demonstrates Lifecare's ability to listen to the market and deliver solutions that improve patient care, while improving efficiency and reducing costs. This multi-purpose mask is available in adult and paediatric versions and offers medium, controlled and high concentration oxygen therapy, as well as aerosol and nebuliser therapy all in one flexible system. The Combination Mask eliminates the need to stock multiple masks, thereby saving money and reducing wastage. Four simple conversions can convert this mask easily and quickly into four different oxygen therapy solutions.



ORDERING

Part codes

Adult Duo Mask with headband (50):	L2000
Adult Duo Mask with headband & tubing (50):	L2001/S
Paed Duo Mask with headband (50):	L2005
Paed Duo Mask with headband & tubing (25):	L2006/S
Adult Duo Mask with earloops (50):	L2007
Paed Duo Mask with earloops (50):	L2018
Micro-Neb III with angle connector (50):	L6007
Corrugated 22mm tubing in 50m coil (25):	L5000
Blue Venturi with Reservoir tubing (50):	L4002/24%
White Venturi with Reservoir tubing (50):	L4002/28%
Orange Venturi with Reservoir tubing (50):	L4002/31%
Yellow Venturi with Reservoir tubing (50):	L4002/35%
Red Venturi with Reservoir tubing (50):	L4002/40%
Green Venturi with Reservoir tubing (50):	L4002/60%

MEDIUM CONCENTRATION (MC) MASK**Secure fit for all nose bridges**

MEDIUM CONCENTRATION (MC) MASK

Product overview

The Lifecare Medium Concentration (MC) Mask provides maximum patient comfort and unsurpassed performance. The MC Mask features a soft, lightweight construction with rolled flash-free edges to reduce skin contact to promote patient comfort. The integral nose-band and anatomical design ensures a secure fit for all nose bridges and may be easily adjusted by either the patient or carer. The MC Mask includes a rotating oxygen connector and the unique Lifecare anti-occlusion rib to avoid accidental occlusion of a Guedel Airway. The crystal clear construction improves patient monitoring. Designed to make a high-quality medium concentration mask affordable, the MC Mask is available in both adult and paediatric versions.

ORDERING

Part codes

Adult MC Mask with headband (50):

Adult MC Mask with headband and 1.8m tubing (25):

Adult MC Mask with headband and 2.1m tubing (25):

Paed MC Mask with headband (50):

Paed MC Mask with headband and 1.8m tubing (25):

Adult MC Mask with earloops (50):

L2009

L2010

L2011

L2015

L2016

L2017



Medium Concentration (MC) Mask

VENTURI MASKS - FIXED CONCENTRATION without Tubing (24%-60%)

Crystal clear construction improves patient monitoring

VENTURI MASKS - FIXED CONCENTRATION with Tubing (24%-60%)

Product overview

The Venturi delivers the prescribed oxygen concentrations irrespective of the patient's respiratory pattern. The Venturi jets can be easily changed to varying oxygen concentrations. This affordable device can also be used to deliver humidity aerosol therapy by means of a humidification hood.

ORDERING

Part codes

Adult Venturi Mask with blue 24% venturi (25):	L4100/24%
Adult Venturi Mask with white 28% venturi (25):	L4100/28%
Adult Venturi Mask with orange 31% venturi (25):	L4100/31%
Adult Venturi Mask with yellow 35% venturi (25):	L4100/35%
Adult Venturi Mask with red 40% venturi (25):	L4100/40%
Adult Venturi Mask with green 60% venturi (25):	L4100/60%
Venturi Recovery 'T' Piece with 40% jet (25):	L4011/40%
White Venturi Jet (50):	L4102/28%
Orange Venturi Jet (50):	L4102/31%
Yellow Venturi Jet (50):	L4102/35%
Red Venturi Jet (50):	L4102/40%
Green Venturi Jet (50):	L4102/60%
Adult Venturi Mask Kit containing four venturi jets: 24%, 28%, 35% & 40%	L4005
Paed Venturi Mask Kit containing four venturi jets: 24%, 28%, 35% & 40%	L4007



VENTURI MASKS - FIXED CONCENTRATION with Tubing (24%-60%)**Can be changed to varying oxygen concentrations**

VENTURI MASKS - FIXED CONCENTRATION without Tubing (24%-60%)

Product overview

When accuracy is the primary consideration, the Venturi Mask ensures peak inspiratory flow is catered for due to the safety reservoir tube so the patient always receives the prescribed amount of oxygen. The venturi sometimes operates at flows in excess of 78 L/min, which may cause patient discomfort if positioned too close to the face. The reservoir tube prevents this by acting as a diffuser providing a gentle flow, resulting in greater patient compliance. The Venturi Mask features a soft, lightweight construction with rolled flash-free edges to reduce skin contact and increase patient comfort. The integral nose-band and anatomical design ensures a secure fit for all nose bridges and may be adjusted easily by either the patient or carer. The crystal clear construction improves patient monitoring.

ORDERING

Part codes

Adult Venturi Mask with Reservoir tubing and blue 24% venturi (25):	L4000/24%
Adult Venturi Mask with Reservoir tubing and white 28% venturi (25):	L4000/28%
Adult Venturi Mask with Reservoir tubing and orange 31% venturi (25):	L4000/31%
Adult Venturi Mask with Reservoir tubing and yellow 35% venturi (25):	L4000/35%
Adult Venturi Mask with Reservoir tubing and red 40% venturi (25):	L4000/40%
Adult Venturi Mask with Reservoir tubing and green 60% venturi (25):	L4000/60%
Paed Venturi Mask with Reservoir tubing and blue 24% venturi (25):	L4006/24%
Paed Venturi Mask with Reservoir tubing and white 28% venturi (25):	L4006/28%
Paed Venturi Mask with Reservoir tubing and orange 31% venturi (25):	L4006/31%
Paed Venturi Mask with Reservoir tubing and yellow 35% venturi (25):	L4006/35%
Paed Venturi Mask with Reservoir tubing and red 40% venturi (25):	L4006/40%
Paed Venturi Mask with Reservoir tubing and green 60% venturi (25):	L4006/60%
Adult Venturi Mask kit with tubing containing two venturi jets - 24% & 28% (20): venturi (25):	L4004T 24/28/%



Venturi Masks with tubing

Clement Clarke's Product Portfolio

Technical Specifications

Peak Expiratory Flow

Mini-Wright Standard

Dimensions:	158 x ø64mm
Weight:	76g
Measurement Range:	60-880 L/min (EU Scale) 60-880 L/min (ATS Scale)
Accuracy:	± 10% or 10 L/min
Repeatability:	< 5 L/min

eMini-Wright

Dimensions:	94 x 38 x 44mm
Weight:	42g
Measurement Range:	PEF 60-850 L/min
Accuracy:	PEF 5% or 10 L/min
Resolution:	PEF 5.0 L/min
Max. Resistance to Flow:	<2.5 cm H ₂ O/L/s below 14 L/s
Zoning Thresholds:	Green/Yellow 80% Yellow/Red 50%
Memory:	240 PEF
Power:	Lithium coin CR2302
Battery Life:	2 years (Based on 3 readings per day/3 measurements per reading)

Mini-Wright AFS Low Range

Dimensions:	149 x ø38mm
Weight:	56g
Measurement Range:	30-400 L/min (EU Scale) 30-400 L/min (ATS Scale)
Accuracy:	± 10% or 10 L/min
Repeatability:	< 5 L/min

Airzone

Dimensions:	139 x 44 x 35mm
Weight:	44g
Measurement Range:	60-800 L/min (EU Scale) 60-720 L/min (ATS Scale)
Accuracy:	± 10% or 10 L/min
Repeatability:	< 5 L/min

Inhaler Technique Training

Trainhaler

Dimensions:	72 x 37 x 28mm
Weight (with Flo-Tone):	16g

Trainhaler CR

Dimensions:	ø27.9 x 63.5mm
Weight (with Flo-Tone CR):	14g

Flo-Tone CR MDI

Dimensions:	37 x 23 x 42mm (without cap)
Weight:	3.22g (without cap)
Whistle Actuation:	20-30 L/min
Accuracy:	100% tested

Positive Whistle Mask

Dimensions:	73 x 86 x 42mm
Weight:	21g
Whistle Actuation:	20-30 L/min
Accuracy:	100% tested

Flo-Check

Dimensions:	37.3 x 33.6 x 23.9mm
Weight:	3g

In-Check DIAL G16

Dimensions:	174 x 58mm (w/o mouthpiece) 213 x 58mm (with mouthpiece)
Weight:	106g
Measurement Range:	15 - 120 L/min
Accuracy:	±10% or 10 L/min
Repeatability:	5 L/min

In-Check M

Dimensions:	158 x ø44mm
Weight:	78g
Measurement Range:	15 - 120 L/min
Accuracy:	10% or ± 10 L/min
Repeatability:	5 L/min

Peak Inspiratory Flow

In-Check Nasal

Dimensions:	158 x ø44mm
Weight:	85g (without mask)
Measurement Range:	30 - 370 L/min
Accuracy:	10% or ± 10 L/min
Repeatability:	5 L/min

In-Check Oral

Dimensions:	158 x ø44mm
Weight:	85g
Measurement Range:	30 - 370 L/min
Accuracy:	10% or ± 10 L/min
Repeatability:	5 L/min



Spacers

Flo-Tone CR

Dimensions:	37 x 23 x 42mm
Weight:	3.22g
Whistle Actuation:	20-30 L/min
Accuracy:	100% tested

DispozABLE Spacer

Dimensions:	ø84mm x 107mm
Weight:	15g
Volume:	227ml
Resistance to flow:	Free flow

A2A Spacer

Dimensions:	154 x 55 x 67mm (open)
Weight:	57g
Volume:	210ml
Resistance to flow:	10mm of water at 30 litres/minute

Able Spacer

Dimensions:	155 x 55 x 66mm
Weight:	62g
Volume:	210ml
Resistance to flow:	10mm of water at 30 litres/minute

Nebulisation

Airmed Travel-Air

Dimensions:	106 x 66 x 128mm (w/o battery) 106 x 66 x 166mm (with battery)
Weight:	395g (w/o battery) 712g (with battery)
Electrical Requirements:	12VDC from AC adapter or battery pack
Flow Range and Pressure Range:	5.0 - 6.7 L/min, 8 - 10 psi 50 - 70 kPa, 0.5 - 0.7 bar
Particle Size:	MMAD 4 microns
Avg Nebulisation Rate:	>0.20ml/min
Compliance:	Electrical Safety Class II Type BF, Continuous
Battery Operating Time:	>35 minutes

Airmed 1000

Dimensions:	170 x 193 x 99mm
Weight:	1.38 kg
Electrical Requirements:	AC 230V 50 Hz
Flow Range and Pressure Range:	4 - 8 L/min, 10 - 16 psi 70 - 110 kPa, 0.7 - 1.1 bar
Particle Size:	MMAD 4 microns
Avg Nebulisation Rate:	>0.20ml/min
Compliance:	Electrical Safety Class II Type BF, Continuous

MEDIX Econoneb[^]

Dimensions:	206 x 209 x 179mm
Weight:	2.7kg
Electrical Requirements:	220 - 240V or 50 - 60Hz
Typical Dynamic Flow:	7 - 9 L/min at 138 kPa*
Particle Size:	MMAD 3.4 microns*
% Fine Particle Fraction:	69.20% of particles <5 microns*
Aerosol Output Rate:	0.39ml per minute**
Compliance:	Electrical Safety Class II Type BF, Continuous use. Class IIa MDD 93/42/EEC CE 0120

MEDIX Turboneb 2[^]

Dimensions:	206 x 209 x 179mm
Weight:	2.7kg
Electrical Requirements:	220 - 240V or 50 - 60Hz
Typical Dynamic Flow:	9.5 - 10.5 L/min at 138 kPa*
Particle Size:	MMAD 3.2 microns*
% Fine Particle Fraction:	71.67% of particles <5 microns*
Aerosol Output Rate:	0.46ml per minute**
Compliance:	Electrical Safety Class II Type BF, Continuous use. Class IIa MDD 93/42/EEC CE 0120

MEDIX AC2000[^]

Dimensions:	363 x 230 x 118mm
Weight:	2.9kg
Electrical Requirements:	220 - 240V or 50 - 60Hz (110V 60Hz model also available)
Typical Dynamic Flow:	7 - 9 L/min at 138 kPa*
Particle Size:	MMAD 3.4 microns*
% Fine Particle Fraction:	68.63% of particles <5 microns*
Aerosol Output Rate:	0.38ml per minute**
Compliance:	Electrical Safety Class II Type BF, Continuous use. Class IIa MDD 93/42/EEC CE 0120

[^] Aerosol output and particle size data achieved using Lifecare Micro-neb III in accordance with ISO

* Measured in accordance with BSEN 13544-1

** Values will vary depending on viscosity of solutions being nebulised

Members of HAAG-STREIT Group

HAAG-STREIT HOLDING AG
www.haag-streit-holding.com

HAAG-STREIT Deutschland GmbH
www.haag-streit.de

HAAG-STREIT AG
www.haag-streit.com

IPRO GmbH
www.ipro.com

SPECTROS AG
www.spectros.ch

CLEMENT CLARKE INTERNATIONAL Ltd.
www.clement-clarke.com

HAAG-STREIT Medtech AG
www.haag-streit-medtech.com

HAAG-STREIT UK
www.haag-streit-uk.com

HAAG-STREIT France EURL
www.haag-streit.fr

JOHN Weiss Ltd.
www.johnweiss.com

HAAG-STREIT Far East
www.haag-streit-fareast.com

HAAG-STREIT USA
www.haag-streit.usa.com

HAAG-STREIT Surgical GmbH
www.haag-streit-surgical.com

Reliance Medical Inc.
www.haag-streit-usa.com

Moller-Wedel GmbH & Co KG
www.moeller-wedel.com

Asetronics AG
www.asetronics.ch

Moller-Wedel Optical GmbH
www.moeller-wedel-optical.com

ComLab AG
www.comlab.ch

CLEMENT CLARKE INTERNATIONAL LTD.

Edinburgh Way, Harlow, Essex CM20 2TT (UK)

Phone : +44 (0)1279 414969

Fax : +44 (0)1279 456300

Email: resp@clement-clarke.com

Web: www.clement-clarke.com

Part Code: 1903031 Issue 5. 09/17
© CLEMENT CLARKE INTERNATIONAL Ltd,
E&OE Sept 2017

