

LYMED® CATALOGUE

Skin™

Compression™

Sense™

Interim & Light™

Post-operation™

Well-being™

Sport™

**ALL UP-TO-DATE INFORMATION:
WWW.LYMED.FI**



LYMED LEARNING CENTER

Lymed Learning Center is a source of information for both professionals and end users of Lymed products. The study material has been divided into several presentations. Choose the most interesting topic and start studying! Lymed study materials can be used to gain general knowledge about pressure garment industry or to find in-depth knowledge on pressure treatments.

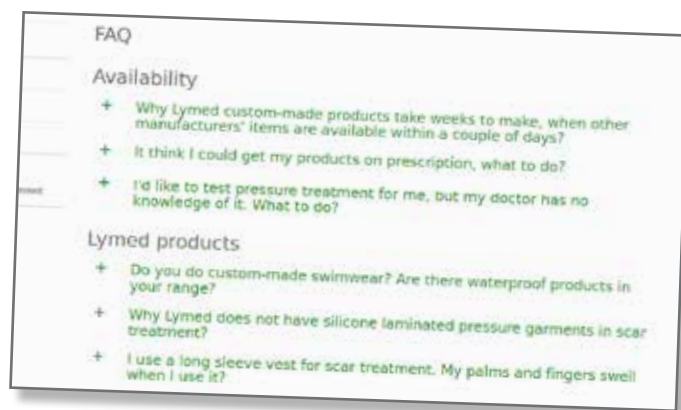
Lymed Learning Center is updated regularly. All references to sources can be found in "research and study" section. Presentations are also used in Lymed's own workshops and training sessions. Study materials are free for all to use with correct source references!

FREQUENTLY ASKED QUESTIONS/FAQ

**"Why should I wash my product daily?
Silicone band causes irritation, how can I prevent it?
Why there are no natural fibers in your products?"**

In Lymed's FAQ page we provide answers to these and many other questions. We continuously collect frequently asked questions from our clients and professionals on:

- Availability
- Lymed products
- Material
- Pressure and compression treatment
- Measuring and ordering



FILE BANK

Lymed file bank is especially compiled for professional use. File bank includes all our up-to-date documents:

- Lymed product catalogue
- Measuring instructions
- Wear and care instructions

LYMED® PRODUCTS

Lymed products page provides information on how to use our pressure garments:

- Instructional videos for donning
- Wear & care instructions



...AND MUCH MORE!



PRODUCT INFORMATION

Company	5
Indications of use	6
Implementation of Medical Device Directive	8
Warranty, repairs & product support	9
Measuring & ordering	10
Choosing the right product	11
Pressure and compression	12
Material guide	13
Colors	14
Silicone and elastane bands	15
Additions and special solutions	16
Stocking options	17

SKIN™ | Pressure garments for scar management

Vests, abdominal support, sternal strap	19
Bodys	20
Pants	21
Legs and stockings	22
Sleeves and gloves	24
Web spacer and digital cap	27
Head and neck products	28

COMPRESSION™ | Medical compression garments

Vests and bodys	32
Compression bra	34
Pants	35
Suspensor	38
Maternity pants	39
Legs and stockings	40
Sleeves and gloves	42
Head products	45

SENSE™ | Neurological pressure garments

Scapula support vest and body	47
Vests	48
Overalls	49
Bodys	50
Pants	52
Legs and stockings	53
Sleeves and gloves	55

INTERIM & LIGHT™ | Interim care and light pressure garments

Vests	59
Pants	60
Gloves and sleeves	61
Stockings	63
Head products	64

POST-OPERATION™ | Post-operational support garments

Pants for women	66
Vest and sleeves	68
Bras and breast wrap	70
Abdominal bands	75
Head products	77

WELL-BEING™ | Pressure garments for wellness and health

Control Posture shirt	80
-----------------------	----

SPORT™ | Pressure garments for sports

Active overall	82
Active vest	83
Active pants	84
Active leg and sock	85
Active sleeve	86
Recovery pants	87

LYMED® Medical pressure garments from the heart of Finland!

Lymed has been founded in 1993, in the city of Tampere. From the very beginning Lymed has been known as a leader and a developer in its field of high-quality medical pressure garments for lymphoedema, scar management, pain, neurological therapy, sports and well-being. We develop and study pressure garments and pressure treatment constantly, in close cooperation with hospitals and research centers, to produce our award-winning pressure garments for both the public and private sector.

We are a medical aid manufacturer with a strong focus on deepening the understanding and applications of pressure treatment. Lymed studies pressure treatment constantly and innovates at a level which transcends different industries. Combining new technologies and traditional knowhow, Lymed's multi-talented staff are made of sewing personnel, tailors, designers, engineers, customer services and logistics.

MANUFACTURING OF LYMED® GARMENTS

The aim of every Lymed garment is to give the best possible result in pressure treatment, to be comfortable and have a polished, stylish look while doing so. The Lymed design process guarantees that the garments have medically correct, controlled pressure levels. Pressure levels can even vary within one product to fit the requirements of the treatment itself.

Lymed design process allows for individual needs, such as donning and doffing, work, hobbies and physical limitations. Unique custom-made products and special solutions are possible since each and every member of our group partakes in the designing and planning process of a garment. Lymed has daily contact with its end users, which helps Lymed to stay on top of clients' needs and guarantees their active role in product development.

Both custom-made and standard sized garments are designed in Tampere. Lymed custom-made garments are made from start to finish in Finland. Standard sized Lymed garments' cutting and sewing is done both in Tampere and in Estonia. Each garment will be labelled with its corresponding manufacturing country.

Lymed is one of the last few businesses in textile industry who produces bespoke, handmade products. All of Team Lymed has left their mark on your garment!

WHAT ARE PRESSURE GARMENTS?

Medical pressure garments are used to treat various types of diseases and physiological problems. Users of pressure garments may suffer from e.g. burns, chronic pain, edema, cancer or physical challenges caused by cerebral palsy, autism or hypotonia.

Pressure garment is a tight fitting piece of clothing, which generates pressure on a desired body part or the entire body. Therapeutic effects of garments are based on precisely calculated and controlled pressure.



reddot award 2014
winner



FINNISH
TEXTILE &
FASHION
HONORABLE
MENTION 2018



The text below is information based on scientific sources, which can be applied, in parts, by the person responsible for the patient's care while constantly evaluating each client's history. Principles of pressure treatment and goals of the treatment must be clear before choosing any pressure garments. Lymed is not responsible for the implementation or the follow-up of pressure treatment. Lymed is also not responsible for the direct or indirect loss caused by the product or the service of it, damage, or any loss of income because of the beforementioned. Read more on pressure treatment and its indications of use from www.lymed.fi.

PRESSURE THERAPY FOR SCAR MANAGEMENT

Pressure garments are used to prevent and manage hypertrophic scars, keloids and erythema. Pressure garment is beneficial only if the scar is not fully matured. An unmaturation scar is relatively new, itchy and red. The pressure garment evens out the scar and accelerates the maturation process. Pressure garment therapy is widely accepted, primary treatment method for treating scars. The pressure treatment has been shown to thin the dermis, flatten the scar and realign the collagen according to epidermis. The pressure generated by medically controlled garments minimizes tissue edema and the division on cells. Additional scar treatment products (gel sheets, silicones) can be used with garments.

Pressure treatment can also be used as a prophylactic measure for wounds that do not heal as fast thus having an increased risk of hypertrophic scars. Garments should be used as soon as the healing skin can tolerate the optimal scar treatment pressure. In the beginning of the scar treatment, interim garments can be used at a lower pressure level before transitioning to optimal pressure levels. Garments should be used for 23 hours per day for approximately 12 months, or as long as it's needed, until scar maturation is achieved. Garments should be custom-made to ensure optimal pressure without causing tissue damage. The fit should be monitored regularly to prevent tissue damage. The garment for scar treatment should achieve a theoretical pressure near capillary pressure (20 to 30mmHg).

Examples of use:

- Burns, scars, keloids
- Skin grafts
- Hypertrophic scars
- Hemangiomas
- Ichthyosis, Epidermolysis bullosa
- Acne scarring

Objectives:

- Prevention and management of hypertrophic scars
- Maturation of the scar
- Evening out the scar for a flexible and a lighter skin
- Reducing itchiness and pain

EDEMA TREATMENT WITH COMPRESSION

In edema treatment the pressure is generated so that it gives a gradual compression. The strongest support is in the extremities, gradually decreasing towards the midsection. These garments are called medical compression garments. Compression treatment is the removal or prevention of edema with the use of these garments. Compression treatment can be implemented in every compression class from A to IV. Compression garments support the natural lymphatic circulation of the body. They are mostly used during the day. Compression therapy requires a strong commitment to care. There are no contraindications in using compression garments during the night or when at rest. However, the garment can be removed or a garment with less compression can be acquired for night-time, if the compression feels uncomfortable.

Compression treatment is needed when the person has venous insufficiency, lymphatic edema, venous ulcers, swelling caused by injuries or operations. Swelling is caused by the intercellular accumulated fluid. The reason for this might be insufficiencies in the lymphatic system or surface veins or even tissue damage.

Venous insufficiency causing swelling of the feet is generated by the slowed down blood flow back from the lower extremities, whilst venous pressure climbs higher causing fluids to seep through from capillary veins to the tissues. Swelling arises when the capacity of the lymphatic system cannot remove the accumulated fluid. Most common reason for swelling is venous insufficiency, which can manifest itself by causing lymphoedema or varicose veins. Venous insufficiency can also cause changes in the skin, inflammation and leg ulcers. Preventive measures are recommended to those with stagnant lifestyles (lots of sitting or standing), when travelling, during pregnancies and in the aftercare of operations. The onset of symptoms of congenital illnesses can be significantly delayed by preventive compression therapy.

Examples of use:

- Lymphoedema, lipoedema
- Ulcers, deep venous thrombosis
- Traumas
- Restless feet
- Klippel-Trénaunay syndrome
- Pain caused by lymphatic problems

Objectives:

- Prevention
- Removal of excess fluids from the system
- Decreasing inflammation
- Pain management

POST-OPERATIVE AFTERCARE

Compression and pressure treatment is used in the aftercare of several surgeries to remove and prevent swelling, bruising and alleviate the pain in the operated area. The compression and pressure treatment supports rehabilitation by helping to regain mobility after operations. Multiple sources indicate that pressure treatment supports healing by removing excess fluids from the area and preventing edema after the surgery. Compression/pressure garments are also used to ensure the attachment of the operated tissue.

Examples of use:

- Liposuctions
- Breast operations
- Lower body and abdominal operations
- Childbirth and c-sections
- Facial operations
- Upper arm operations

Objectives:

- Aftercare of operations
- Preventing swelling and scar growth at the same time
- Re-attachment of tissues

NEUROLOGICAL PRESSURE GARMENTS

Changes achieved with pressure garments in movement and body control are neurophysiological and biomechanical in nature. Exact mechanisms are yet unknown. Central nervous system is a complex organization of nerve cells in which all activity is generated from external stimuli (Kottke, 1980). Nervous system gets feedback from our motor cortex and turns the sensory and proprioceptive feedback into movement. Proprioception, deep pressure, vibration and light touch are all somatosensory inputs that enhance learning within the central nervous system: this is how we interpret the world itself. Pressure from skin contact and increased internal soft tissue pressure leads to enhanced proprioceptive feedback to improve positional limb and body awareness, improving muscle activation and movement control. It is also suggested that pressure garments have a dampening effect on external force vectors acting across joints, containing overshooting of the limbs beyond the intended target point and increasing predictability of movement that may possibly enhance mechanical stability. Prolonged stretch and cutaneous stimulation from the tight skin contact results in reduction of the degree of spasticity and improves passive range of motion.

The theoretical basis of pain treatment is the gate control theory, which states that pain signals are not free to reach the brain as soon as they are generated at the injured tissues or sites. They need to encounter certain 'neurological gates' at the spinal cord level and these gates determine whether the pain signals should reach the brain or not. In other words, pain is perceived when the gate gives way to the pain signals and it is less intense or not at all perceived when the gate closes for the signals to pass through. This theory gives the explanation for why someone finds relief by rubbing, stroking or blowing air into the injured or painful area. Pressure garments can subjectively have positive effects in pain management and its disorders.

Examples of use:

- Hypotonia and other movement disorders
- Autism, ADHD/ADD
- EDS, CRPS and other pain disorders
- Thoracic outlet syndromes, scoliosis
- Ataxy, dystonia
- Cerebral Palsy (CP), spasticity, Parkinson's, atetosis
- Rett syndrome, Down syndrome
- Strokes, cerebrovascular diseases

Objectives:

- Body control and support
- Pain management
- Controlling of muscle tone
- Awakening of deep pressure input
- Increasing functionality
- Soothing effect
- Body awareness
- Improving quality of sleep

SPORTS

Pressure garments are used in sports to intensify body's own abilities before, during and after performance. Pressure provides outer support for the muscle. It enhances muscle's ability to perform actively. Compression improves metabolism and expedites recovery processes. Adequate recovery is needed to improve performance and pressure garments help the body to bounce back faster. A well-working circulation of fluids prevents cramps and minimizes risk of injuries. Pressure garments increase body awareness, deep sensory input and proprioceptics thus stabilizing the body. Pressure garments can be used in all types of sports and exercise, by top athletes and sport enthusiasts alike.

Objectives:

- Improving motor skills and proprioceptics
- Enhancing recovery, minimizing tissue edema
- Prevent incorrect posture
- Decreasing muscle pain, activating fascias

ANIMALS

Products can be used to affect different neurological disorders, calm the animal and improve concentration, even during performance, and support recovery after stressful events. Indications for products might be, e.g., sound sensitivity, fears, anxieties and hyperactivity. Products are well suitable to be used in assisting recovery after performance or work. Garments can relieve acute or chronic pain and aid post-operative recovery.

Compression garments for racing sighthounds have a harder, progressive pressure level that is designed to enhance metabolism after performance.

Garments can be manufactured to most farm and domestic animals, such as dogs, horses and camels. User base can include sports and recreational animals, service and guide animals, detection and rescue animals as well as police animal units.

www.lymedanimal.com





DIRECTIVE OF MEDICAL DEVICES

The Medical Devices Directive (93/42/EEC) is intended to harmonize medical device requirements within the EU. The CE marking of the medical device directive may be granted to a manufacturer who meets the requirements of the directive. In Europe, the manufacturer itself classifies its equipment according to the MDD classification rules. The implementation of the directive is supervised by Valvira in Finland.

DECLARATION OF CONFORMITY FOR STANDARD-SIZED PRODUCTS

All Lymed products manufactured and manufactured by Lymed Oy are CE labeled, medical grade I products. Products are non-sterile. With the CE mark, the manufacturer verifies that the product meets the essential requirements set in the Directive. Each standard-sized product is labeled with the CE mark.

STATEMENT OF CONFORMITY FOR INDIVIDUALLY MANUFACTURED PRODUCTS

Lymed's custom-made products meet the essential requirements of Directive 93/42/EEC and are always manufactured for a specific individual. The name of the patient is always stated in the label inside the product. Lymed custom-made products are medical devices, as their need and use is controlled by the patient's medical personnel.

EXCEPTION TO THE DIRECTIVE

If a patient orders a Lymed custom-made product without the recommendation of their medical personnel, then the patient is solely responsible for the treatment and the product does not meet the medical device directive.



WARRANTY

Lymed's manufactured products have a warranty of 4 months and pressure guarantee of 6 months. The warranty covers, as a rule, only product manufacturing and material defects. Lymed is responsible for the statutory liability for errors in products, when the product is out of warranty or guarantee is not issued.

Service products do not have a similar right of withdrawal, as per Consumer Protection Act, if the service has been completed or if the customer has given permission to begin producing the service or if the lack of right of withdrawal has been told in advance. This applies, for example (but not exclusively) to situations where the customer for whom the product has been ordered, has died, or the order needs to be changed or cancelled, even if the delivery of the product has already begun.

RETURNS

- Custom jobs have no right of return or exchange.
- Lymed Oy grants a guarantee for standard-sized products that is specified in terms and conditions. Standard-sized products have a 14-day refund and return policy when the product does not differ from the basic model, ie. is a stock color with no added special solutions, and is returned in a perfect condition.

If you have purchased the product from Lymed's dealer or distributor, the product should be sent there. The consignment should always be accompanied with information on the damage claim, for example, using a complaint form. Contact your dealer's customer service before returning the product.

REPAIRS

Lymed offers repair service for its products. Repair is done in accordance with Lymed's terms and conditions. Always first notify Lymed's customer service or if you have bought our products from another retail point, the dealer or distributor that served you. Repair prices are estimates, and are non-binding and indicative. Each compensation is assessed as circumstances dictate. Lymed, as a rule, does not do repairs to non-Lymed products. Exceptions are assessed case by case. If you are in doubt whether a repair would be covered by the warranty, please contact us at Lymed or your dealer or distributor to obtain return instructions.

Products sent for repair should be well washed and completely dry. Lymed has the right to refuse repair for a poorly washed product. Product should be recognizable from its washing label. Lymed will not repair products that have already been repaired by another party.

Repairs are not made if safety of the product will be jeopardized, the product is not applicable to its intended original use or if the costs of the repair exceed the amount of a new, similar product.

The product attributes may change during repair. For example, the number of seams may vary. The ordering party takes full responsibility about the comfort of the repaired product. Lymed recommends ordering a new product, rather than repairing the old one, if the product is worn.

Lymed products are available for both the public and the private healthcare sector. Trained Lymed measurers can be found all over our distributing countries. Our measurers are mainly associated with compression treatment, occupational physiotherapy and neurological physiotherapy. Our measurers take care of the entire ordering process of custom-made Lymed garments.

Standard-sized products are directly available from our distributors or Lymed. Please see our page www.lymed.fi for details.

ORDER PROCESS: CUSTOM-MADE GARMENT

1. Choosing a product

- Personnel responsible for treatment determine which product is needed based on product catalogue
- Choosing correct pressure levels or compression classes
- Products for children made until 13 years of age

2. Measuring and ordering

- Determining delivery and invoicing information
- Measuring the patient using instructions
- Providing additional information, special needs and photos

3. Sending orders to a Lymed distributor

Production time is generally 10 to 15 business days from the arrival of the order.

4. Delivery

Products are delivered to the preferred address.

ORDER PROCESS: STANDARD SIZED GARMENT

1. Choosing a product

Personnel responsible for treatment determine which product is needed.

2. Choosing a size

- Determining delivery and invoicing information
- Choosing a correct size based on 1-2 measurements. Instructions found from the product catalogue.

3. Sending orders to a Lymed distributor

The usual production time is, for a non-stock standard item, 3-8 business days from the arrival of the order.

4. Delivery

Products are delivered to the preferred address.

WHEN TO ORDER A NEW GARMENT?

The fit of the garment must be monitored regularly. It is generally recommended that a garment is either replaced or re-fitted every three months to maintain optimal pressure and care result. Active users, like children or working adults, may require new garments even more often.

A pressure garment needs to be replaced when

- Patient's weight or measurements change,
- Washing no longer cleans the material properly and the feel of the garment becomes greasy,
- Elasticity of the product decreases and the original pressure levels change,
- Garment, or a part of it, breaks down.

ORDERING SPECIALIZED ITEMS

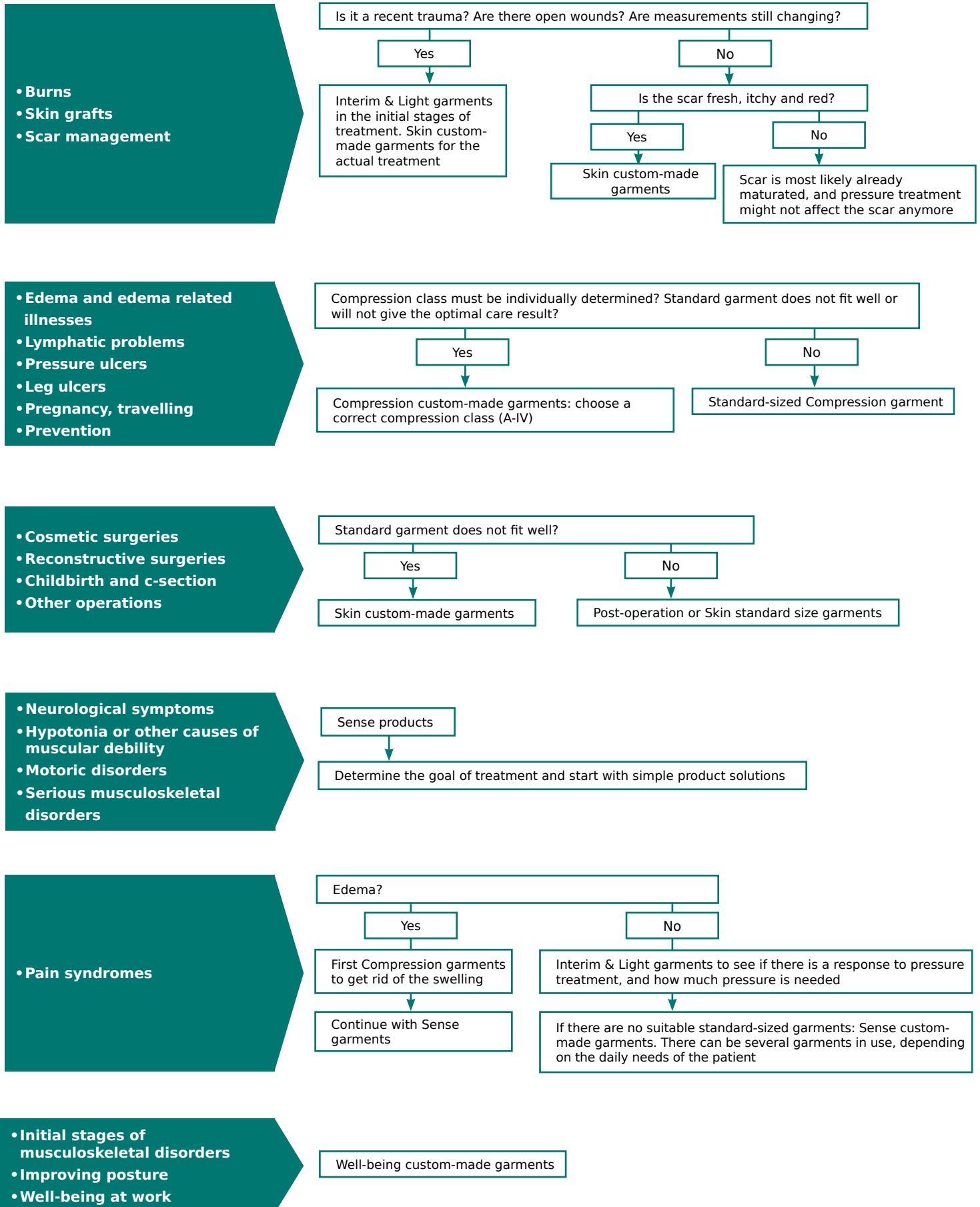
Some standard items can be ordered custom-made:

- Post-operation products: can be ordered as a Skin garment, with individual measurements
- Interim & Light products: can be ordered as a Sense garment, with individual measurements

Ordering Sense products for pain, with edema present:

- If there is edema present in the initial stages of pain management, please order a Compression product first. When edema is no longer present, a neurological Sense pressure garment can be ordered.

EXAMPLES ON HOW TO CHOOSE A CORRECT LYMED PRODUCT BASED ON AN INDICATION

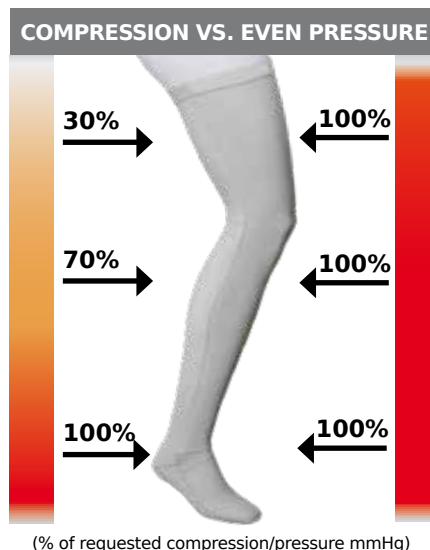


HOW PRESSURE IS CREATED WITH GARMENTS

The effects of compression or pressure can be achieved by creating garment which implements a controlled, outside pressure to the body. Compression garments are constructed with a progressive compression where the strongest support is in the extremities, gradually decreasing towards the midsection. In even pressure garments the pressure is built evenly distributed throughout the product.

The pressure is formed by the relation of the circumferences of the area that needs to be treated and the garment itself. The pressure is calculated based on Laplace's Law (a principle of physics where the tension on the wall of a sphere is the product of the pressure times the radius of the chamber and the tension is inversely related to the thickness of the wall).

The units used in pressure treatment are called millimeters of mercury (mmHg). The pressure class is used to define the lowest and the highest theoretical pressures between which the real pressure will fall. The calculatory pressure might not duplicate itself fully on living tissue due to the variation in the consistency of it. In custom-made products the pressure class can be defined more specifically, compared to standard-sized products. This also allows the use of a greater pressure level more safely than in standard products. More the pressure garment covers, the greater will be its effects on the body. The real pressure provided by the garment can be measured with a pressure monitor when the garment is in use. The levels of real pressure during an extensive period of use can be monitored with pressure monitors.



COMPRESSION AND PRESSURE LEVELS OF LYMED® PRODUCTS

Lymed Compression garments are based on the European prestandard ENV 12718/2001 (a comparison of compression standards: www.lymed.fi). Different classifications are mainly created to guide the discourse of compression levels, help with medical diagnosis and to be used as a tool amongst healthcare professionals. In medical compression aids, like Lymed products, the level of compression is always given in millimeters of mercury (mmHg), which makes it very easy to compare them to different compression classifications. The pressure levels in different Lymed product groups are based on recommendations set out in literature. The pressure or compression class is chosen based on the injury, diagnosis or the area to be treated. In special cases it is possible to have different pressure levels as well as a combination of progressive and even pressure.

Lymed garments and materials are tested annually by independent, specialized testing facilities. This guarantees that the products have the compression indicated and that the products also keep their notified compression and pressure. With the help of Finnish testing facilities, Lymed has also developed different simulations and test methods to maintain the high quality of the products.

PRESSURE LEVELS

Even pressure

Skin™ products	23 - 30 mmHg
Sense™ products*	10 - 30 mmHg
Interim & Light™ products	10 - 18 mmHg
Post-operation™ products	23 - 30 mmHg
Well-being™ products*	10 - 18 mmHg

THEORETICAL PRESSURE LEVELS

Pressure levels are affected by the size of the product and variation of body tissue. Pressure levels can be influenced by the choice of size in standard products. The realized pressure varies from patient to patient.

*COMBINED EVEN PRESSURE AND COMPRESSION

Lymed Sense garments cater to a plethora of needs and special solutions. There are notable variations of pressure levels within the product group. Sense products can be made with a combination of even pressure and compression.

Lymed Well-being garments are made with a combination of even pressure and compression. Sport garments are made with a combination of different compression classes.

COMPRESSION CLASSES CCL

Progressive pressure

	A	10 - 14 mmHg
Compression™ products	I	15 - 21 mmHg
	II	23 - 32 mmHg
Sport™ products*	III	34 - 46 mmHg
	IV	< 49 mmHg

GUIDELINES FOR DIFFERENT COMPRESSION CLASSES

CCL A - prevention: Persons that have minor lymphatic problems, minimal edema, enlarged veins.

CCL I - mild: Varicose veins, daily swelling ie. lymphoedema, acrosyanosis, post-varicectomy and -sclerotherapy, arthrosis.

CCL II - moderate: Post-thrombotic syndrome, deep venous thrombosis & insufficiency, ulcer treatment, post-trauma treatment, irreversible lymphoedema, lipoedema.

CCL III - strong: Severe edema, chronic hypodermatitis, irreversible lymphoedema.

CCL IV - very strong: All the pathologies listed in their most severe form.

LYMED® PRODUCT INFORMATION

Material guide

Recommended use is a general guideline to guarantee the best possible wear and quality. The fabric of the garment is always chosen to support the care prescribed by the physician and the garment is constructed to support the treatment of the patient. Each garment is individually manufactured to fit specific needs. Unusual fabric choices are possible but can affect the durability of the garment. Lymed does not compensate the product or repair it without cost when using other than recommended fabrics. NB: Material choices for standard products and Sport product group cannot be changed.

	STRONG FABRIC (P91)	MEDIUM FABRIC (P07)	LIGHT FABRIC (P50)
Recommendations for custom-made garments			
Skin™	✓	✓	✗
Compression™	✓	✓	✗
Sense™	✓	✓	✗
Recommendations for compression garments			
Compression classes	A-IV Primary choice of fabric	A-II	✗
Features			
High durability needed*	✓	✗	✗
Composition	61 % polyamide 39 % elastane	54 % polyamide 46 % elastane	83 % polyamide 17 % elastane
Structure	Flat knitted warp knit	Flat knitted warp knit	Flat knitted warp knit
Abrasion resistance (Martindale)	>150 000	>150 000	90 000
Breathability	447 l/m ² /s	466 l/m ² /s	246 l/m ² /s
Thickness	0,64 mm	0,57 mm	0,48 mm
UV Protection	98% UV protection	98% UV protection	98% UV protection

* Recommended choice for products that demand exceptionally high durability e.g. gloves and stockings.

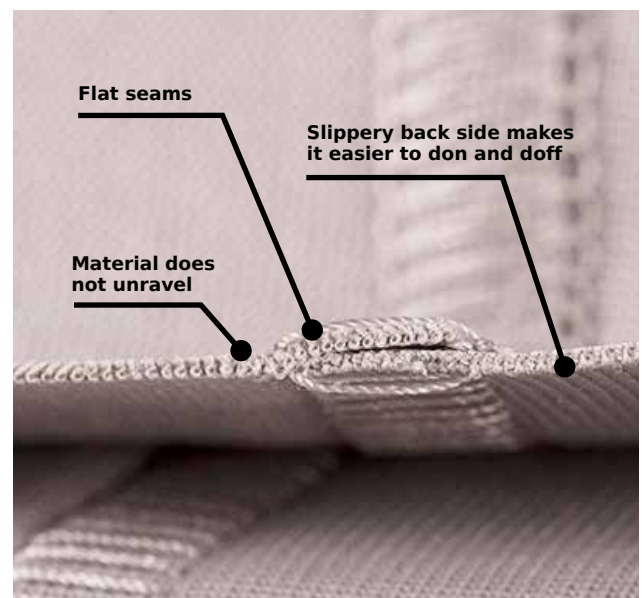


LYMED® MATERIALS

Lymed's materials are highly exceptional in pressure garment manufacturing. High quality materials, hand-picked by Lymed, do not contain rubber or other known allergens. Lymed products are made with Oeko-Tex standardized polyamide-elastane knits, manufactured in Europe without harmful chemicals. Materials are made responsibly and ethically, without child labor.

Lymed products are made from flat knitted warp knits. Warp knits tend to be better at forming compression and build tight curves into a garment. One of the big benefits is the fact that it doesn't unravel.

Fabrics are tested annually for durability, color fastness, and other properties. Fabrics pass the most gruesome tests – their resistance to abrasion is more than 150 000 Martindales (SFS-EN ISO 12947-2)! SPF of the fabrics is 98%. The inside of all Lymed products is designed to be slippery, reducing extra friction during donning and doffing.

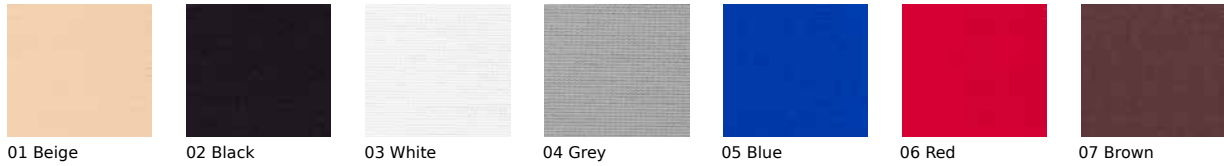


LYMED® PRODUCT INFORMATION

Colors

Lymed materials do not contain rubber, coated rubber or other known allergens.

FABRIC COLORS



01 Beige 02 Black 03 White 04 Grey 05 Blue 06 Red 07 Brown

Colors in standard-sized products

Stock colors and other color options are described in each product's information. Ordering other than stock colors may affect the delivery time and the return policy.

SEAM COLORS



B1 Beige B2 Black B3 White B4 Grey B5 Blue B6 Red B7 Brown B8 Pink B9 Green B10 Yellow B11 Orange B12 Light blue

DECORATED EMBLEMS



A. Ladybird B. Frog C. Fly D. Car E. Skull F. Football G. Bird H. Cat I. Dog J. Butterfly K. Flower L. Candy M. Teddybear N. Lizard

FABRICS & SEAMS



LYMED® PRODUCT INFORMATION

Silicone and elastane bands

Lymed elastane and silicone bands do not contain rubber, coated rubber or other known allergens. The properties of each Lymed product are defined in products pages, including possible elastane and silicone bands used in an individual product.



IRRITATION CAUSED BY SILICONE BANDS

Based on literature, most of the reactions caused by silicones are non-allergic and non-specific. It is usually plain irritation, caused by skin's properties, skin care products and hygiene – and the combination of them all. Individual elements, like pH of the skin, microbes, sweat, skin lotions and personal hygiene, can cause the irritation. Irritation can increase when sweating is more prominent – for example in higher temperatures. One can remove some of the irritation by cleaning the silicone band and the skin below it more frequently than before.

Every product can be manufactured without the silicone band, or by changing its place. There are several silicone band options available, and they can be changed into the product when needed. In some cases, a change into a model that does not require silicone bands at all could be beneficial (e.g. different strap options or models with more coverage). Best silicone band options for sensitive skin are SIL 1 and SIL 2.

LYMED® PRODUCT INFORMATION

Additions and special solutions

AVAILABLE ADDITIONS TO PRODUCTS

- All additions are not available for all products. If a choice cannot be manufactured onto a product, Lymed will contact the person responsible for the order.
- New patient orders: Lymed recommends ordering a "basic model" first before adding any special solutions to it.
- Finishing options are mainly for adult's models. The best choice for the product is evaluated per order.
- Prices available from your Lymed retailer.
- Children's sizes are made for under 13 year olds.

Additions to custom-made products

	Art.No
Additional zipper, e.g. for socks or gloves	AZ
Zipper guard to cushion or shield the skin	AZF
Individual hooks, e.g. to help underneath the zipper	AHZ
Silicone, grip	ASI
High waist, custom	HW
Shoulder straps for pants	AB
Pocket for prosthesis	APP
Pouch, amputated limb	AAC
Additional hooks	AH
Additional Velcro	AV
Multicolor manufacturing	AMC
Additional digit to palm-glove or open toed sock	ADP

Other additions, e.g.: turtle necks, pockets in different sizes (with/without neoprene reinforcing), seam reinforcements and linings, partial or complete product linings.

LYMED PRODUCT DESIGN

- Small sized products for babies, exceptionally large products for bigger circumferences
- Malformations, e.g. dysmelia and extensive tissue damage
- Amputation stump modification
- Double fabrics, neoprene supports and other product reinforcements to add local pressure and support
- Splint pockets, neoprene softeners and pockets for other materials and prostheses
- Adjustable straps and velcros for facilitation of the body
- Solutions for genital area, e.g. flaps, pockets and openings

DONNING AND DOFFING SOLUTIONS

DIFFICULTIES IN DONNING

- Zipper or hook fastenings – or a combination of the two - for the sock, pelvic area of the trousers, for sleeves, for the arm of the glove, for vest, etc.
- Zipper pullers and strings

PREVENTING MATERIAL FOLDS, CREASES & ILL-FITTING PRODUCTS

- Different options of silicone or elastane bands can be added to the upper edges of products. Bands can be changed if needed.
- Additional silicone bands can be added on the inside of each product to create more friction, e.g. on the thigh area of pants.
- Products can be fastened together with hooks and velcros, e.g. fastening a vest onto pants.
- Products can have specialized fastening solutions if the choices presented in the catalogue are not a good fit.



LYMED® PRODUCT INFORMATION

Stocking options

THE LARGEST SELECTION OF STOCKING CHOICES AVAILABLE!

Lymed stockings are manufactured with an even pressure or compression. Compression stockings are manufactured in various compression classes. Compression stockings are available in preventive compression class A and medical compression classes I-IV. Official compression products in classes I-IV are known as medical compression stockings. Also, terms "medical compression socks or stockings" or "therapeutic compression socks" are in use.

Medical products made with compression or even pressure, are suitable for the treatment of diseases and conditions. Lymed custom-made stockings are made in Tampere, from start to finish. Lymed can manufacture challenging product solutions and personalized choices to all of its stockings.

EASY APPLICATION AIDS

There are different solutions available for donning and doffing of Lymed stockings. The most popular is the zipper, which can be manufactured almost anywhere on the product, in all lengths.

Additions to products can be considered when there are difficulties in using the basic models, or there is a need for independent donning and doffing.

POPULAR ADDITIONS TO STOCKINGS

- Zippers: partial or full length
- Zippers with guard to protect the skin underneath
- Waist straps
- Hooks, velcros or a combination of the two
- Additional silicone bands
- Zipper pullers and strings
- Pockets, fillings and solutions to help the changing of dressings



Thigh-high stocking with waist strap

ZIPPER CHOICES FOR LYMED STOCKINGS

A zipper can be placed almost everywhere on the product, based on preference of the client and how the stocking will be donned. Assistive hooks can be added beneath the zipper to ease with the process of putting the stocking on.

Zipper solutions are handy in wound care and changing of wound dressings, e.g. in leg ulcers. Zipper is a helpful and fast solution in assistive donning & doffing. In independent donning zipper may remove the need for other donning & doffing aids.

Zipper locations

- Interior, front
- Exterior, front
- Middle, front (default location)



Full length, open edge

Full length, intact edge

Partial length

TIP CHOICES FOR STOCKINGS

Stockings can be manufactured with various tip models depending on the client's personal needs.

- Toes open or closed
- Foot glove and other special models
- Separate toe glove which enables the use of a toe glove and stockings separately, if needed



Toes closed

Toes open

Foot glove, closed tips

Foot glove, open tips

Toe glove closed

Toe glove open



SKIN™

SKIN™

PRESSURE GARMENTS FOR SCAR MANAGEMENT



Custom-made

Standard size

Pressure treatment can be used as a prophylactic measure for wounds or skin grafts that do not heal as fast thus having an increased risk of hypertrophic scars. Garments should be used as soon as the healing skin can tolerate the optimal scar treatment pressure. Lymed Skin™ products are available for all body parts, and products are mainly custom-made.

Lymed Skin garments for scar treatment are manufactured with even pressure. In even pressure garments the pressure is evenly distributed throughout the product. Products are used for individual scar treatment with optimal scar management pressure.

To ensure product's safety, Lymed recommends to have a critical approach towards suitability of standard-sized products in scar treatment. According to literature, optimal benefits from pressure treatment cannot be achieved if the garment is too loose. On the other hand, too tight or an ill-fitting product may cause a negative effect. Lymed recommends that garments should be custom-made to sustain optimal pressure without causing tissue damage. The fit of the product should be monitored regularly.



VEST

Custom-made

Model	Product/Art.No			
	Sleeveless	Short sleeves	Long and short sleeve	Long sleeves
Women	PR21411	PR21422	PR21423	PR21433
Men	PR22411	PR22422	PR22423	PR22433
Children	PR10411	PR10422	PR10423	PR10433

ABDOMINAL SUPPORT

Custom-made

Model	Art.No
Women	PR21400
Men	PR22400
Children	PR10400

Product information:

Long-sleeved vest with anatomical elbow construction. Axilla construction primarily from medium material. Women's vest with anatomical breast construction. Separate abdominal support is made of fabric. It can be used whenever extra pressure is needed in the midsection.

Recommended material:	Strong (P91), medium (P07)
Colors available:	All
Fastening:	None / hooks / zipper with guard
Details:	Hemline SIL 1
	Neckline ELA 3
	Edge of sleeve ELA 2
	Sleeveless model, edging ELA 3
	Abdominal support: Upper edge SIL 3, lower edge ELA 1

STERNAL STRAP

Standard size

Size	Circumf.*	Art.No
XXS	50 - 59 cm	STPR701
XS	60 - 69	STPR702
S	70 - 79	STPR703
M	80 - 89	STPR704
L	90 - 99	STPR705
XL	100 - 110	STPR706

Product information:

Two-piece product with velcro fastening on sides and shoulders. Suitable for scar treatment on sternal area e.g. after open heart surgery. Can be used individually or with a vest. Splint pocket included. *Circumference of the chest below breasts.

Material:	Strong (P91)
Stock color:	Beige
Colors available:	All
Pressure level:	Adjustable
Fastening:	Velcro



BODY

Custom-made

Model	Product/Art.No					Additions
	Sleeveless	Short sleeves	Long and short sleeve	Long sleeves	Short legs	
Women	PR214011	PR214022	PR214023	PR214033	PRA21L	
Children	PR104011	PR104022	PR104023	PR104033	PRA10L	

Product information:

Long-sleeved body with anatomical elbow construction. Axilla construction primarily from medium material. Women's body with anatomical breast construction. Basic model is shaped as high-cut brief, excluding legs.

Recommended material:	Strong (P91), medium (P07)
Colors available:	All
Fastening:	Hooks/ zipper with guard at the front Push-buttons at the crotch
Details:	Neckline and leg opening ELA 3 Edge of sleeve ELA 2 Sleeveless model, edging ELA 3 Short legs: edge of leg ELA 2



PANTS Custom-made

Model	Product/Art.No					
	Short legs	Short and long leg	Short leg and leg with sock	Long legs	Long leg and leg with sock	Stockings
Women	PR21522	PR21523	PR21524	PR21533	PR21534	PR21544
Men	PR22522	PR22523	PR22524	PR22533	PR22534	PR22544
Girls	PR11522	PR11523	PR11524	PR11533	PR11534	PR11544
Boys	PR12522	PR12523	PR12524	PR12533	PR12534	PR12544

Product information:

Anatomical construction at the knee and ankle. Constructions made from medium material when product is manufactured from strong material. Men's models with contouring at the front.

Recommended material: Strong (P91)
Medium (P07)

Colors available: All

Details: Waist ELA 1
Leg opening ELA 2



LEG		Custom-made		
Model	Product/Art.No			Additions
	Ankle-knee	Knee-thigh	Ankle-thigh	Waist strap
Adults	PR20601	PR20602	PR20603	A20B
Children	PR10601	PR10602	PR10603	A10B

Product information:

Ankle-high model with anatomical knee construction. Constructions made from medium material, when product is manufactured from strong material.

Recommended material: Strong (P91), medium (P07)

Colors available: All

Fastening: None / hooks / zipper

Waist strap for thigh-high models: 4 cm elastane band

Details: Upper edge SIL 4, upper edge in knee-high SIL 1, lower edge ELA 2.



STOCKING		Custom-made			
Model	Toes	Product/Art.No			Additions
		Ankle-high	Knee-high	Thigh-high	Waist strap
Adults	Closed	PR20619	PR20629	PR20639	A20B
Adults	Open	PR20618	PR20628	PR20638	A20B
Adults	Toe sock, closed	PR20619FG	PR20629FG	PR20639FG	A20B
Adults	Toe sock, open	PR20618FG	PR20628FG	PR20638FG	A20B
Children	Closed	PR10619	PR10629	PR10639	A10B
Children	Open	PR10618	PR10628	PR10638	A10B
Children	Toe sock, closed	PR10619FG	PR10629FG	PR10639FG	A10B
Children	Toe sock, open	PR10618FG	PR10628FG	PR10638FG	A10B

Product information:

Anatomical knee and ankle constructions. Constructions made from medium material, when product is manufactured from the strong material.

Recommended material: Strong (P91), medium (P07)

Colors available: All

Fastening: None / hooks / zipper

Waist strap for thigh-high model: 4 cm elastane band

Details: Upper edge: SIL 1, upper edge in thigh-high SIL 4, lower edge, tip open ELA 2.

FOOT GLOVE		Custom-made
Model	Toe tips	Art.No
Adults	Closed	PRA20T9
Adults	Open	PRA20T8
Children	Closed	PRA10T9
Children	Open	PRA10T8

Product information:

For the treatment of foot or toes. Can be used by itself or e.g. with an open toe sock. (picture p.17)

Recommended material: Strong (P91), Medium (P07)

Colors available: All

Fastening: None

Details: None

**ADDITIONS FOR STOCKINGS,
SEE PAGE 17**



SLEEVE Custom-made

Model	Product/Art.No		
	Wrist-elbow	Elbow-axilla	Wrist-axilla
Adults	PR20301	PR20302	PR20303
Children	PR10301	PR10302	PR10303

Product information:

Wrist-axilla model with anatomical elbow construction.

Recommended material: Strong (P91)
Medium (P07)

Colors available: All

Fastening: None / models 1-3

Details: Upper edge SIL 1
Lower edge ELA 2

SLEEVE GAUNTLET Custom-made

Model	Thumb	Product/Art.No	
		To elbow	To axilla
Adults	Closed	PR2031019	PR2031039
Adults	Open	PR2031018	PR2031038
Children	Closed	PR1031019	PR1031039
Children	Open	PR1031018	PR1031038

Product information:

Axilla-length model with anatomical elbow construction. Anatomical construction in the thumb crotch.

Recommended material: Strong (P91)

Colors available: All

Fastening: None / models 1-3

Details: Upper edge SIL 1
Lower edge ELA 2

SLEEVE GLOVE Custom-made

Model	Fingers	Product/Art.No	
		To elbow	To axilla
Adults	Closed	PR2031119	PR2031139
Adults	Open	PR2031118	PR2031138
Children	Closed	PR1031119	PR1031139
Children	Open	PR1031118	PR1031138

Product information:

Axilla-length model with anatomical elbow construction. Anatomical construction between the fingers and in the thumb crotch.

Recommended material: Strong (P91)

Colors available: All

Fastening: None / models 1-3

Details: Upper edge SIL 1

SLEEVE FASTENING 1

Custom-made

Model	Product/Art.No
	Model 1 Shoulder flap
Adults	A20S1
Children	A10S1

Product information:

Elastic strap running under the breast to hold the sleeve up. Fastening with velcro. Suitable especially for users with large breasts. Available for all sleeves reaching up to axilla.

Material:	ELA 1
Color:	Same as sleeve



SLEEVE FASTENING 2

Custom-made

Model	Product/Art.No
	Model 2 Shoulder flap
Adults	A20S2
Children	A10S2

Product information:

Elastic strap running under the axilla to hold the sleeve up. Fastening with velcro. Available for all sleeves reaching up to axilla.

Material:	ELA 1
Color:	Same as sleeve



SLEEVE FASTENING 3

Custom-made

Model	Product/Art.No
	Model 3 Opposite sleeve
Adults	A20S3
Children	A10S3

Product information:

Short sleeve for the opposite arm to hold the therapeutic sleeve in place. Recommended when sleeve does not stay put or when treatment is needed in the axilla area. Opposite sleeve with the same pressure as the ordered sleeve. Only by separate request: no pressure on the opposite sleeve. Light pressure on the bolero. Available for all sleeves reaching up to axilla.

Material:	Same as sleeve
Color:	Same as sleeve
Fastening:	Hooks / zipper
Details:	Neckline ELA 3
	Hemline SIL 1
	Edge of op. sleeve ELA 2





GLOVE

Custom-made

Model	Product/Art.No	
	Fingertips closed	Fingertips open
Adults	PR203119	PR203118
Children	PR103119	PR103118

Product information:

Anatomical construction between the fingers and in the thumb crotch (picture above). Number of dorsal seams in glove may vary due to individual measurements and pressure/compression levels.

Recommended material: Strong (P91)

Colors available: All

Fastening: None / hooks / zipper

Details: Wrist edging ELA 3

GLOVE

Standard size

Size	Circumf.*	Product/Art.No			
		Fingertips closed		Fingertips open	
		Right	Left	Right	Left
XXS	14 - 16 cm	STPR31191R	STPR31191L	STPR31181R	STPR31181L
XS	17 - 18	STPR31192R	STPR31192L	STPR31182R	STPR31182L
S	19 - 20	STPR31193R	STPR31193L	STPR31183R	STPR31183L
M	21 - 22	STPR31194R	STPR31194L	STPR31184R	STPR31184L
L	23 - 24	STPR31195R	STPR31195L	STPR31185R	STPR31185L
XL	25 - 26	STPR31196R	STPR31196L	STPR31186R	STPR31186L
XXL	27 - 28	STPR31197R	STPR31197L	STPR31187R	STPR31187L

Product information:

Anatomical construction between the fingers. *Circumference at MCP.

Material: Strong (P91)

Stock color: Beige

Colors available: All

Pressure level: 23-30 mmHg

Details: Wrist edging ELA 3

GAUNTLET

Custom-made

Model	Product/Art.No	
	Thumb closed	Thumb open
Adults	PR203109	PR203108
Children	PR103109	PR103108

Product information:

Anatomical construction in the thumb crotch (picture above).

Recommended material: Strong (P91)

Colors available: All

Fastening: None / hooks / zipper

Details: Wrist edging ELA 3

Palm edging ELA 2

GAUNTLET

Standard size

Size	Circumf.*	Product/Art.No	
		Thumb open	
		Right	Left
XXS	14 - 16 cm	STPR3101R	STPR3101L
XS	17 - 18	STPR3102R	STPR3102L
S	19 - 20	STPR3103R	STPR3103L
M	21 - 22	STPR3104R	STPR3104L
L	23 - 24	STPR3105R	STPR3105L
XL	25 - 26	STPR3106R	STPR3106L
XXL	27 - 28	STPR3107R	STPR3107L

Product information:

*Circumference at MCP.

Material: Strong (P91)

Stock color: Beige

Colors available: All

Pressure level: 23-30 mmHg

Details: Wrist edging ELA 3

Palm edging ELA 2



WEB SPACER

Standard size

Model Product/Art.No

One size

Adults STPR2037

Children STPR1037

Product information:

Web spacer gives extra pressure between fingers.
Product is adjustable and suitable for both hands.
Intended to be worn over a pressure glove.

Material: Elastic velcro, elastane strap
Colors available: Black, beige
Fastening: Velcro

DIGITAL CAP - 5 pcs

Standard size

Size Product length Circumf.* Art.No

XS 5 cm 4 - 5 cm STPR342

S 5,5 5 - 6 STPR343

M 6,5 6 - 7 STPR344

L 7,5 7 - 8 STPR345

XL 8,5 8 -9 STPR346

Product information:

Suitable for scar management on both hand's fingers.
Packaging: 5 pc polybag.
*Circumference around the PIP joint.

Material: Medium (P07)
Stock color: Beige
Colors available: All
Pressure level: 23-30 mmHg



CHIN STRAP

Custom-made

Model	Product/Art.No	
	Ear area open	Ear area closed
Adults	PR2011	PR2012
Children	PR1011	PR1012

Product information:

Velcro fastenings on the crown of the head and back of the neck.

Recommended material: Strong (P91)
Medium (P07)

Colors available: All

Fastening: ELA 1 with velcro

Details: Edging ELA 3

CHIN STRAP

Standard size

Size	Circumf.*	Product/Art.No	
		Ear area open	Ear area closed
XXS	50 - 54 cm	STPR111	STPR121
XS	55 - 58	STPR112	STPR122
S	59 - 62	STPR113	STPR123
M	63 - 66	STPR114	STPR124
L	67 - 70	STPR115	STPR125
XL	71 - 74	STPR116	STPR126

Product information:

Velcro fastenings on the crown of the head and back of the neck.

*Circumference from crown to chin.

Material: Strong (P91)

Stock color: Beige

Colors available: All

Pressure level: Adjustable

Fastening: ELA 1 with velcro

Details: Edging ELA 3

HEADBAND

Custom-made

Model	Product/Art.No
Adults	PR2010
Children	PR1010

Product information:

Velcro fastening at the back of the neck.

Recommended material: Strong (P91)
Medium (P07)

Colors available: All

Fastening: Velcro

Details: Edging ELA 3



HELMET

Custom-made

Model	Product/Art.No	
	Face open	Face closed
Adults	PR20138	PR20139
Children	PR10138	PR10139

Product information:

Close-faced model is used to hold e.g. wound and scar care products in place. Can be used over face masks.

Openings for eyes, mouth and nose are cut when fitting the product: fit the helmet on and mark the places for openings. Remove the helmet and cut with scissors. Material does not unravel when cut.

Recommended material: Strong (P91)
Medium (P07)

Colors available: All

Fastening: Hooks/occipital zipper

Details: Edging ELA 3



PRESSURE COLLAR Custom-made

Model	Art.No
Adults	PR202
Children	PR102

Product information:

Collar with 3 mm neoprene filling. Velcro fastening in the back of the neck.

Material: Strong (P91)
Neoprene

Colors available: All

Pressure level: Adjustable

Fastening: Velcro

PRESSURE COLLAR Standard size

Size	Model	Circumf.*	Height		Art.No
			Front	Back	
XXS	Children	20 - 24 cm	4,5 cm	3 cm	STPR21
XS	Children	25 - 30	4,5	3	STPR22
S	Adults	31 - 35	7	5,5	STPR23
M	Adults	36 - 40	7,5	5,5	STPR24
L	Adults	41 - 45	8	5,5	STPR25
XL	Adults	46 - 50	9	6	STPR26

Product information:

Collar with 3 mm neoprene filling. Velcro fastening in the back of the neck.

*Circumference around the neck.

Material: Strong (P91) with neoprene fill

Stock color: Beige

Colors available: All

Pressure level: Adjustable

Fastening: Velcro



COMPRESSION™

MEDICAL COMPRESSION GARMENTS



Custom-made

Standard size

Compression treatment is needed when the person has venous insufficiency, lymphatic edema, venous ulcers or swelling caused by injuries or operations. Swelling is caused by the intercellular accumulated fluid. The reason for this might be insufficiencies in the lymphatic system or surface veins or even tissue damage. Compression garments support the natural lymphatic circulation of the body. Preventive measures are recommended to those with stagnant lifestyles (lots of sitting or standing), when travelling, during pregnancies and in the aftercare of operations.

Lymed Compression™ products are mainly custom-made with compression class determined by the person responsible for client's care.

To ensure product's safety, Lymed recommends to have a critical approach towards suitability of standardized products in compression treatment. According to literature, optimal benefits from pressure treatment cannot be achieved if the garment is too loose. On the other hand, too tight or an ill-fitting product may cause a negative effect. Lymed recommends that garments should be custom-made to sustain optimal compression without causing tissue damage. The fit of the product should be monitored regularly.



VEST Custom-made

Model	Product/Art.No			
	Sleeveless	Short sleeves	Long and short sleeve	Long sleeves
Women	CO21411	CO21422	CO21423	CO21433
Men	CO22411	CO22422	CO22423	CO22433
Children	CO10411	CO10422	CO10423	CO10433

Product information:

Long-sleeved vest with anatomical elbow construction. Axilla construction primarily from medium material. Women's vest with anatomical breast construction.

Recommended material: Strong (P91), medium (P07)

Colors available: All

Fastening: None / hooks / zipper with guard

Details: Hemline: SIL 1

Neckline: ELA 3

Edge of sleeve ELA 2

Sleeveless model: edging ELA 3

Separate abdominal support available for midsection: please see product details from Lymed Skin -product group p.19



BODY

Custom-made

Model	Product/Art.No					Additions
	Sleeveless	Short sleeves	Long and short sleeve	Long sleeves	Short legs	
Women	CO214011	CO214022	CO214023	CO214033	COA21L	
Children	CO104011	CO104022	CO104023	CO104033	COA10L	

Product information:

Long-sleeved body with anatomical elbow construction. Axilla construction primarily from medium material. Women's body with anatomical breast construction. Basic model is shaped as high-cut brief, excluding legs.

Recommended material: Strong (P91), medium (P07)

Colors available: All

Fastening: Hooks/ zipper with guard at the front, Push-buttons at the crotch

Details: Neckline and leg opening ELA 3
Edge of sleeve ELA 2

Sleeveless model: edging ELA 3

Short legs: edge of leg ELA 2



COMPRESSION BRA

Standard size

Size	Circumf.*	Product/Art.No						
		Two cups	Without cups	Cup on the right	Cup on the left	Prosthesis pocket, both	Prosthesis pocket, right	Prosthesis pocket, left
XS	68 - 76 cm	STCO752	STCO762	STCO762R	STCO762L	STCO752PP	STCO752PR	STCO752PL
S	76 - 84	STCO753	STCO763	STCO763R	STCO763L	STCO753PP	STCO753PR	STCO753PL
M	84 - 89	STCO754	STCO764	STCO764R	STCO764L	STCO754PP	STCO754PR	STCO754PL
L	89 - 94	STCO755	STCO765	STCO765R	STCO765L	STCO755PP	STCO755PR	STCO755PL
XL	94 - 104	STCO756	STCO766	STCO766R	STCO766L	STCO756PP	STCO756PR	STCO756PL
XXL	104 - 114	STCO757	STCO767	STCO767R	STCO767L	STCO757PP	STCO757PR	STCO757PL
XXXL	114 - 127	STCO758	STCO768	STCO768R	STCO768L	STCO758PP	STCO758PR	STCO758PL

Product information:

A very sturdy compression bra, meant to remove swelling from the sides and the underarm area. A full coverage model with hook fasteners between the breasts. The straps are wide, adjustable and can be opened. Available with either of the cups, cupless or with pockets for prosthesis (both or either side). Basic stock model with hooks, zipper fastening only by request.

*Circumference at the chest below the breasts.

Material:	Strong (P91)
	Pocket for prosthesis: Medium (P07)
Stock color:	Black, white
Colors available:	Black, white, brown
Compression level:	Ccl II
Fastening:	Hooks / zipper on request
Details:	Hemline ELA 1
	Edging ELA 3



PANTS

Custom-made

Product information:

Anatomical construction at the knee and ankle. Constructions made from medium material when product is manufactured from strong material. Constructions are made from strong material in classes III and above. Men's models with contouring at the front.

Recommended material: Strong (P91)
Medium (P07)

Colors available: All

Details: Waist ELA 1
Leg opening ELA 2

Model	Product/Art.No					
	Short legs	Short and long leg	Short leg and leg with sock	Long legs	Long leg and leg with sock	Stockings
Women	CO21522	CO21523	CO21524	CO21533	CO21534	CO21544
Men	CO22522	CO22523	CO22524	CO22533	CO22534	CO22544
Girls	CO11522	CO11523	CO11524	CO11533	CO11534	CO11544
Boys	CO12522	CO12523	CO12524	CO12533	CO12534	CO12544



Picture: Normal waist with add-on flap (FS), shoulder straps

COMPRESSION PANTS FOR WOMEN | NORMAL WAIST

Standard size

ADDED COMPRESSION FOR GENITAL EDEMA

Model	Circumf.*		Product/Art.No		
	Pelvis (cm)	Thigh (cm)	Knee length	Calf length	Ankle length
XS	86 - 90	50 - 52,5	STCO21512	STCO21522	STCO21532
S	91 - 95	53 - 56	STCO21513	STCO21523	STCO21533
M	96 - 101	56,5 - 59	STCO21514	STCO21524	STCO21534
L	102 - 110	59,5 - 62	STCO21515	STCO21525	STCO21535
XL	111 - 121	62,5 - 65	STCO21516	STCO21526	STCO21536
XXL	122 - 132	65,5 - 68	STCO21517	STCO21527	STCO21537
XXXL	133 - 138	68,5 - 71,5	STCO21518	STCO21528	STCO21538
XXXXL	139 - 144	72 - 74,5	STCO21519	STCO21529	STCO21539

Product/Art.No		
Fabric flap, velcro adjustment	Flap with neoprene reinforcement, velcro adjustment	Integrated centerpiece with neoprene reinforcement
FS	FNS	NI

COMPRESSION PANTS FOR WOMEN | HIGH WAIST

Standard size

ADDED COMPRESSION FOR GENITAL EDEMA

Model	Circumf.*		Product/Art.No		
	Pelvis (cm)	Thigh (cm)	Knee length	Calf length	Ankle length
XS	86 - 90	50 - 52,5	STCO21512HW	STCO21522HW	STCO21532HW
S	91 - 95	53 - 56	STCO21513HW	STCO21523HW	STCO21533HW
M	96 - 101	56,5 - 59	STCO21514HW	STCO21524HW	STCO21534HW
L	102 - 110	59,5 - 62	STCO21515HW	STCO21525HW	STCO21535HW
XL	111 - 121	62,5 - 65	STCO21516HW	STCO21526HW	STCO21536HW
XXL	122 - 132	65,5 - 68	STCO21517HW	STCO21527HW	STCO21537HW
XXXL	133 - 138	68,5 - 71,5	STCO21518HW	STCO21528HW	STCO21538HW
XXXXL	139 - 144	72 - 74,5	STCO21519HW	STCO21529HW	STCO21539HW

Product/Art.No
Integrated centerpiece with neoprene reinforcement
NI

Product information:

Basic model for lower limb edema.
Models with added compression meant for genital edema.

Recommended add-on: shoulder straps.
*Circumference at widest point of pelvis and upper thigh.

Material:	Strong (P91)
Stock color:	Black, basic model only
Colors available:	All
Compression level:	Ccl II
Details:	Waist SIL 1, Leg opening ELA 2



**COMPRESSION PANTS FOR MEN |
NORMAL WAIST**

Standard size

**ADDED COMPRESSION
FOR GENITAL EDEMA**

Model	Circumf.*		Product/Art.No		
	Pelvis (cm)	Thigh (cm)	Knee length	Calf length	Ankle length
XS	84 - 89	55 - 57,5	STCO22512	STCO22522	STCO22532
S	90 - 95	58 - 60,5	STCO22513	STCO22523	STCO22533
M	96 - 101	61 - 63,5	STCO22514	STCO22524	STCO22534
L	102 - 107	64 - 66,5	STCO22515	STCO22525	STCO22535
XL	108 - 114	67 - 69,5	STCO22516	STCO22526	STCO22536
XXL	115 - 121	70 - 72,5	STCO22517	STCO22527	STCO22537

Product/Art.No
Fabric flap, velcro fastening
FS

Product information:

Basic model for lower limb edema: contouring in the front.

Model with added compression flap is designed for genital edema: Genitals are placed through the opening in the front of the pants to the compressive pouch. Opening can be cut with scissors to a suitable size. Fit of the flap can be adjusted with velcro fastening.

Recommended add-on: shoulder straps.

*Circumference at widest point of pelvis and upper thigh.

Material:	Strong (P91)
Stock color:	Black, basic model only
Colors available:	All
Compression level:	Ccl II
Details:	Waist SIL 1, Leg opening ELA 2



SUSPENSOR

Standard size

Size	Estim.volume/dl	Art.No
S	6	STCO22503
M	8	STCO22504
L	12	STCO22505
XL	14	STCO22506

Product information:

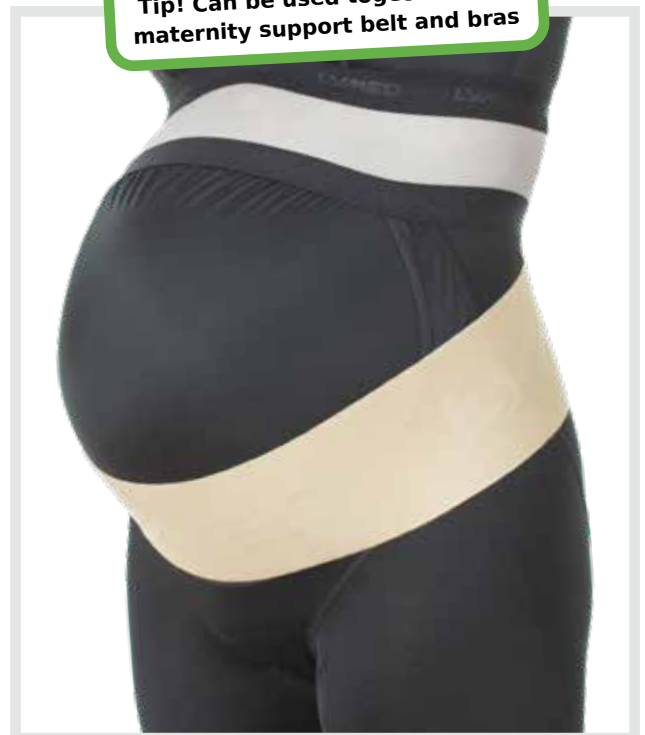
Suspensor for men's genital area edema. Adjustable waist and adjustable straps at the back.

Material:	Strong (P91), light support band
Colors available:	Beige
Pressure level:	Adjustable
Fastening:	Velcro
Details:	Front edging ELA 3 Straps ELA 1

NEW!



Tip! Can be used together with maternity support belt and bras



MATERNITY PANTS

Standard size

Product information:

Maternity compression pants with room for a growing belly. Pants can be used for treatment of edema in lower limbs. Fits most bellies during second trimester, even through the third trimester.

Material:	Strong (P91) Stomach: Light (P50)
Colors available:	All
Compression level:	Ccl II Midsection: light compression
Details:	Waist SIL 1 Leg opening ELA 2

Size	Circumf.*		Product/Art.No		
	Pelvis (cm)	Thigh (cm)	Knee length	Calf length	Ankle length
XS	86 - 90	50 - 52,5	STCOM21512	STCOM21522	STCOM21532
S	91 - 95	53 - 56	STCOM21513	STCOM21523	STCOM21533
M	96 - 101	56,5 - 59	STCOM21514	STCOM21524	STCOM21534
L	102 - 110	59,5 - 62	STCOM21515	STCOM21525	STCOM21535
XL	111 - 121	62,5 - 65	STCOM21516	STCOM21526	STCOM21536
XXL	122 - 132	65,5 - 68	STCOM21517	STCOM21527	STCOM21537
XXXL	133 - 138	68,5 - 71,5	STCOM21518	STCOM21528	STCOM21538



LEG		Custom-made		
Model	Product/Art.No			Additions
	Ankle-knee	Knee-thigh	Ankle-thigh	Waist strap
Adults	CO20601	CO20602	CO20603	A20B
Children	CO10601	CO10602	CO10603	A10B

Product information:

Ankle-thigh model with anatomical knee construction. Constructions made from medium material, when product is manufactured from strong material. Constructions made from strong material in classes III and above.

Recommended material: Strong (P91), medium (P07)

Colors available: All

Fastening: None / hooks / zipper

Details: Waist strap for thigh-high model: 4 cm elastane band
Upper edge SIL 4, upper edge in knee-high SIL 1,
Lower edge ELA 2



STOCKING

Custom-made

Model	Toes	Product/Art.No			Additions
		Ankle-high	Knee-high	Thigh-high	
				Waist strap	
Adults	Closed	CO20619	CO20629	CO20639	A20B
Adults	Open	CO20618	CO20628	CO20638	A20B
Adults	Toe sock, closed	CO20619FG	CO20629FG	CO20639FG	A20B
Adults	Toe sock, open	CO20618FG	CO20628FG	CO20638FG	A20B
Children	Closed	CO10619	CO10629	CO10639	A10B
Children	Open	CO10618	CO10628	CO10638	A10B
Children	Toe sock, closed	CO10619FG	CO10629FG	CO10639FG	A10B
Children	Toe sock, open	CO10618FG	CO10628FG	CO10638FG	A10B

Product information:

Anatomical knee and ankle constructions. Constructions made from medium material, when product is manufactured from the strong material. Constructions made from strong material in classes III and above.

Recommended material: Strong (P91), medium (P07)

Colors available: All

Fastening: None / hooks / zipper
Waist strap for thigh-high model: 4 cm elastane band

Details: Upper edge SIL 1, upper edge in thigh-high SIL 4,
lower edge, tip open ELA 2.

FOOT GLOVE

Custom-made

Model	Toe tips	Art.No
Adults	Closed	COA20T9
Adults	Open	COA20T8
Children	Closed	COA10T9
Children	Open	COA10T8

Product information:

For the treatment of foot or toes. Can be used by itself or e.g. with an open toe sock. (picture p.17)

Recommended material: Strong (P91)
Medium (P07)

Colors available: All

Fastening: None

Details: None

**ADDITIONS FOR STOCKINGS,
SEE PAGE 17**



SLEEVE Custom-made

Model	Product/Art.No		
	Wrist-elbow	Elbow-axilla	Wrist-axilla
Adults	CO20301	CO20302	CO20303
Children	CO10301	CO10302	CO10303

Product information:

Wrist-axilla model with anatomical elbow construction.

Recommended material: Strong (P91)
Medium (P07)

Colors available: All

Fastening: None / models 1-3

Details: Upper edge SIL 1
Lower edge ELA 2

SLEEVE GAUNTLET Custom-made

Model	Thumb	Product/Art.No	
		To elbow	To axilla
Adults	Closed	CO2031019	CO2031039
Adults	Open	CO2031018	CO2031038
Children	Closed	CO1031019	CO1031039
Children	Open	CO1031018	CO1031038

Product information:

Axilla-length model with anatomical elbow construction. Anatomical construction in the thumb crotch.

Recommended material: Strong (P91)

Colors available: All

Fastening: None / models 1-3

Details: Upper edge SIL 1
Lower edge ELA 2

SLEEVE GLOVE Custom-made

Model	Fingers	Product/Art.No	
		To elbow	To axilla
Adults	Closed	CO2031119	CO2031139
Adults	Open	CO2031118	CO2031138
Children	Closed	CO1031119	CO1031139
Children	Open	CO1031118	CO1031138

Product information:

Axilla-length model with anatomical elbow construction. Anatomical construction between the fingers and in the thumb crotch.

Recommended material: Strong (P91)

Colors available: All

Fastening: None / models 1-3

Details: Upper edge SIL 1

SLEEVE FASTENING 1

Custom-made

Model	Product/Art.No
	Model 1 Shoulder flap
Adults	A20S1
Children	A10S1

Product information:

Elastic strap running under the breast to hold the sleeve up. Fastening with velcro. Suitable especially for users with large breasts. Available for all sleeves reaching up to axilla.

Material:	ELA 1
Color:	Same as sleeve



SLEEVE FASTENING 2

Custom-made

Model	Product/Art.No
	Model 2 Shoulder flap
Adults	A20S2
Children	A10S2

Product information:

Elastic strap running under the axilla to hold the sleeve up. Fastening with velcro. Available for all sleeves reaching up to axilla.

Material:	ELA 1
Color:	Same as sleeve



SLEEVE FASTENING 3

Custom-made

Model	Product/Art.No
	Model 3 Opposite sleeve
Adults	A20S3
Children	A10S3

Product information:

Short sleeve for the opposite arm to hold the therapeutic sleeve in place. Recommended when sleeve does not stay put or when treatment is needed in the axilla area. Opposite sleeve with the same compression as the ordered sleeve. Only by separate request: no pressure on the opposite sleeve. Light pressure on the bolero. Available for all sleeves reaching up to axilla.

Material:	Same as sleeve
Color:	Same as sleeve
Fastening:	Hooks / zipper
Details:	Neckline ELA 3
	Hemline SIL 1
	Edge of op. sleeve ELA 2





GLOVE

Custom-made

Model	Product/Art.No	
	Fingertips closed	Fingertips open
Adults	CO203119	CO203118
Children	CO103119	CO103118

Product information:

Anatomical construction between the fingers and in the thumb crotch (picture above). Number of dorsal seams in glove may vary due to individual measurements and pressure/compression levels.

Recommended material: Strong (P91)

Colors available: All

Fastening: None / hooks / zipper

Details: Wrist edging ELA 3

GLOVE

Standard size

Size	Circumf.*	Product/Art.No			
		Fingertips closed		Fingertips open	
		Right	Left	Right	Left
XXS	14 - 16 cm	STCO31191R	STCO31191L	STCO31181R	STCO31181L
XS	17 - 18	STCO31192R	STCO31192L	STCO31182R	STCO31182L
S	19 - 20	STCO31193R	STCO31193L	STCO31183R	STCO31183L
M	21 - 22	STCO31194R	STCO31194L	STCO31184R	STCO31184L
L	23 - 24	STCO31195R	STCO31195L	STCO31185R	STCO31185L
XL	25 - 26	STCO31196R	STCO31196L	STCO31186R	STCO31186L
XXL	27 - 28	STCO31197R	STCO31197L	STCO31187R	STCO31187L

Product information:

Anatomical construction between the fingers. *Circumference at MCP.

Material: Strong (P91)

Stock color: Beige

Colors available: All

Compression level: Ccl II

Details: Wrist edging ELA 3

GAUNTLET

Custom-made

Model	Product/Art.No	
	Thumb closed	Thumb open
Adults	CO203109	CO203108
Children	CO103109	CO103108

Product information:

Anatomical construction in the thumb crotch (picture above).

Recommended material: Strong (P91)

Colors available: All

Fastening: None / hooks / zipper

Details: Wrist edging ELA 3

Palm edging ELA 2

GAUNTLET

Standard size

Size	Circumf.*	Product/Art.No	
		Thumb open	
		Right	Left
XXS	14 - 16 cm	STCO3101R	STCO3101L
XS	17 - 18	STCO3102R	STCO3102L
S	19 - 20	STCO3103R	STCO3103L
M	21 - 22	STCO3104R	STCO3104L
L	23 - 24	STCO3105R	STCO3105L
XL	25 - 26	STCO3106R	STCO3106L
XXL	27 - 28	STCO3107R	STCO3107L

Product information:

Thumb tip open. *Circumference at MCP.

Material: Strong (P91)

Stock color: Beige

Colors available: All

Compression level: Ccl II

Details: Wrist edging ELA 3

Palm edging ELA 2



CHIN STRAP

Custom-made

Model	Product/Art.No	
	Ear area open	Ear area closed
Adults	CO2011	CO2012
Children	CO1011	CO1012

Product information:

Velcro fastenings on the crown of the head and back of the neck.

Recommended material: Strong (P91)
Medium (P07)

Colors available: All

Fastening: ELA 1 with velcro

Details: Edging: ELA 3



HELMET

Custom-made

Model	Product/Art.No	
	Face open	Face closed
Adults	CO20138	CO20139
Children	CO10138	CO10139

Product information:

Close-faced model is used to hold e.g. care products in place. Can be used over face masks.

Openings for eyes, mouth and nose are cut when fitting the product: fit the helmet on and mark the places for openings. Remove the helmet and cut with scissors. Material does not unravel when cut.

Recommended material: Strong (P91)
Medium (P07)

Colors available: All

Fastening: Occipital hooks

Details: Edging ELA 3



SENSE™

NEUROLOGICAL PRESSURE GARMENTS



Custom-made

Standard size

Lymed Sense™ garments are used in occupational and neurological physiotherapy to enhance proprioception of the body, body awareness and deep pressure input. Pressure garments are used, for example, in management of cerebral palsy (CP), autism, hypotonia, Erb's or serratus anterior palsy or other neurological conditions. Lymed Sense garments are also used to manage different types of pain disorders (e.g. CRPS).

Lymed Sense garments can be fully customized to meet the goals of client's treatment and to support client's everyday activities. Zippers, velcros, straps and splint or neoprene pockets are examples of additions which can be used to add comfort and functionality of the product.

To ensure product's safety, Lymed recommends to have a critical approach towards suitability of standard-sized products in client's treatment. According to literature, optimal benefits from pressure treatment cannot be achieved if the garment is too loose. On the other hand, too tight or an ill-fitting product may cause a negative effect. Lymed recommends that garments should be custom-made to sustain optimal pressure without causing tissue damage. The fit of the product should be monitored regularly.



SCAPULA SUPPORT VEST

Custom-made

Model	Product/Art.No			Addition
	Long sleeves	Long and short sleeve	Short sleeves	
				Double scapula supp.
Women	SEE21433	SEE21423	SEE21422	SEE2
Men	SEE22433	SEE22423	SEE22422	SEE2
Children	SEE10433	SEE10423	SEE10422	SEE2

Product information:

Can be used in treatment of Erb's palsy or Serratus anterior palsy. Adjustable and elastic strap and neoprene lining on shoulder area. Also available with double-sided support for both shoulder blades. Straps constructed from elastane band. Long-sleeved vest with anatomical elbow constructions. Axilla constructions made primarily from light material. Women's vest with anatomical breast construction. Without request: manufactured with hooks.

Recommended material:	Strong (P91)
Colors available:	All
Fastening:	None / hooks / zipper with guard
Details:	Hemline SIL 1
	Neckline ELA 3
	Edge of sleeve ELA 2

SCAPULA SUPPORT BODY

Custom-made

Model	Product/Art.No				Addition
	Long sleeves	Long and short sleeve	Short sleeves	Short legs	
					Double scapula supp.
Children	SEE104033	SEE104023	SEE104022	SEA10L	SEE2

Product information:

Can be used in treatment of Erb's palsy or Serratus anterior palsy. Adjustable and elastic strap and neoprene lining on shoulder area. Also available with double-sided support for both shoulder blades and short legs. Straps constructed from elastane band. Long-sleeved vest with anatomical elbow construction. Axilla construction made primarily from light material. Without request: manufactured with hooks.

Recommended material:	Strong (P91)
Colors available:	All
Fastening:	Hooks / zipper with guard
	Push-buttons at the crotch
Details:	Neckline and leg opening ELA 3
	Edge of sleeve ELA 2
	Sleeveless model: edging ELA 3



VEST

Custom-made

Model	Product/Art.No			
	Sleeveless	Short sleeves	Long and short sleeve	Long sleeves
Women	SE21411	SE21422	SE21423	SE21433
Men	SE22411	SE22422	SE22423	SE22433
Children	SE10411	SE10422	SE10423	SE10433

Product information:

Long-sleeved vest with anatomical elbow construction. Axilla construction primarily from medium material. Women's vest with anatomical breast construction.

Recommended material: Strong (P91), medium (P07)

Colors available: All

Fastening: None / hooks / zipper with guard

Details: Hemline SIL 1

Neckline ELA 3

Edge of sleeve ELA 2

Sleeveless model: edging ELA 3

Separate abdominal support available for midsection: please see product details from Lymed Skin -product group p.19



OVERALL

Custom-made

Model	Product/Art.No
	Long sleeves and legs
Children	SE10453333

Product information:

Legs with anatomical knee constructions. Long-sleeved overall with anatomical elbow constructions. Axilla construction made primarily from medium material.

Recommended material:	Strong (P91), medium (P07)
Colors available:	All
Fastening options:	Hooks / zipper with guard
Details:	Neckline ELA 3
	Leg opening ELA 2
	Edge of sleeve ELA 2



BODY

Custom-made

Model	Product/Art.No				Additions
	Sleeveless	Short sleeves	Long and short sleeve	Long sleeves	
Women	SE214011	SE214022	SE214023	SE214033	A21L
Children	SE104011	SE104022	SE104023	SE104033	A10L

Product information:

Long-sleeved body with anatomical elbow construction. Axilla construction primarily from medium material. Women's body with anatomical breast construction. Basic model is shaped as high-cut brief, excluding legs.

Recommended material:	Strong (P91), medium (P07)
Colors available:	All
Fastening:	Hooks/zipper with guard at the front Push-buttons at the crotch
Details:	Neckline and leg opening ELA 3 Edge of sleeve ELA 2 Sleeveless model: edging ELA 3 Short legs: edge of leg ELA 2



ADJUSTABLE BODY

Standard size

Size Art.No

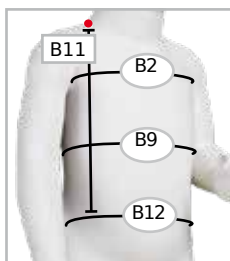
Short sleeves

1	STSE401
2	STSE402
3	STSE403
4	STSE404
5	STSE405
6	STSE406
7	STSE407

Product information:

Adjustable body can be used in occupational and neurological physiotherapy. Different parts of the body can be activated by adjusting the velcro straps at the back and crotch. Medium material at the midsection and axilla for added comfort.

Material:	Strong (P91) and medium (P07)
Stock color:	Beige
Colors available:	All
Fastening:	Velcro behind the back and at the crotch
Pressure level:	Adjustable
Details:	Neckline and leg opening ELA 3 Edge of sleeve ELA 2



Sizes	Measurements (cm)			
	B11	B2	B9	B12
1	25	43	40	42
2	26	47	43	45
3	27	51	46	48
4	28	55	49	52
5	29	59	52	56
6	30	63	55	60
7	31	67	58	64



PANTS

Custom-made

Model	Product/Art.No					
	Short legs	Short and long leg	Short leg and leg with sock	Long legs	Long leg and leg with sock	Stockings
Women	SE21522	SE21523	SE21524	SE21533	SE21534	SE21544
Men	SE22522	SE22523	SE22524	SE22533	SE22534	SE22544
Girls	SE11522	SE11523	SE11524	SE11533	SE11534	SE11544
Boys	SE12522	SE12523	SE12524	SE12533	SE12534	SE12544

Product information:

Anatomical construction at the knee and ankle. Constructions from medium material when product is manufactured from strong material. Men's models with contouring at the front.

Recommended material: Strong (P91)
Medium (P07)

Colors available: All

Details: Waist ELA 1
Leg opening ELA 2



LEG Custom-made

Model	Product/Art.No			Additions
	Ankle-knee	Knee-thigh	Ankle-thigh	
Adults	SE20601	SE20602	SE20603	A20B
Children	SE10601	SE10602	SE10603	A10B

Product information:

Ankle-thigh model with anatomical knee construction. Constructions made from medium material, when product is manufactured from strong material.

Recommended material: Strong (P91), medium (P07)

Colors available: All

Fastening: None / hooks / zipper
Waist strap for thigh-high: 4 cm elastane band.

Details: Knee-high: upper edge SIL 1
Upper edge SIL 4, upper edge in knee-high SIL 1, lower edge ELA 2.

**ADDITIONS FOR STOCKINGS,
SEE PAGE 17**

STOCKING Custom-made

Model	Toes	Product/Art.No			Additions
		Ankle-high	Knee-high	Thigh-high	
Adults	Closed	SE20619	SE20629	SE20639	A20B
Adults	Open	SE20618	SE20628	SE20638	A20B
Adults	Toe sock, closed	SE20619FG	SE20629FG	SE20639FG	A20B
Adults	Toe sock, open	SE20618FG	SE20628FG	SE20638FG	A20B
Children	Closed	SE10619	SE10629	SE10639	A10B
Children	Open	SE10618	SE10628	SE10638	A10B
Children	Toe sock, closed	SE10619FG	SE10629FG	SE10639FG	A10B
Children	Toe sock, open	SE10618FG	SE10628FG	SE10638FG	A10B

Product information:

Anatomical knee and ankle constructions. Constructions made from medium material, when product is manufactured from strong material.

Recommended material: Strong (P91), medium (P07)

Colors available: All

Fastening: None / hooks / zipper
Waist strap for thigh-high model: 4 cm elastane band

Details: Upper edge SIL 1, upper-edge in thigh-high SIL 4, lower edge, tip open ELA 2.



SLEEVE Custom-made

Model	Product/Art.No		
	Wrist-elbow	Elbow-axilla	Wrist-axilla
Adults	SE20301	SE20302	SE20303
Children	SE10301	SE10302	SE10303

Product information:

Wrist-axilla model with anatomical elbow construction.

Recommended material: Strong (P91)
Medium (P07)

Colors available: All

Fastening: None / models 1-3

Details: Upper edge SIL 1
Lower edge ELA 2

SLEEVE GAUNTLET Custom-made

Model	Thumb	Product/Art.No	
		To elbow	To axilla
Adults	Closed	SE2031019	SE2031039
Adults	Open	SE2031018	SE2031038
Children	Closed	SE1031019	SE1031039
Children	Open	SE1031018	SE1031038

Product information:

Axilla-length model with anatomical elbow construction. Anatomical construction in the thumb crotch.

Recommended material: Strong (P91)

Colors available: All

Fastening: None / models 1-3

Details: Upper edge SIL 1
Lower edge ELA 2

SLEEVE GLOVE Custom-made

Model	Fingers	Product/Art.No	
		To elbow	To axilla
Adults	Closed	SE2031119	SE2031139
Adults	Open	SE2031118	SE2031138
Children	Closed	SE1031119	SE1031139
Children	Open	SE1031118	SE1031138

Product information:

Axilla-length model with anatomical elbow construction. Anatomical construction between the fingers and in the thumb crotch.

Recommended material: Strong (P91)

Colors available: All

Fastening: None / models 1-3

Details: Upper edge SIL 1

SLEEVE FASTENING 1

Custom-made

Model Product/Art.No

Model 1
Shoulder flap

Adults A20S1

Children A10S1

Product information:

Elastic strap running under the breast to hold the sleeve up. Fastening with velcro. Suitable especially for users with large breasts. Available for all sleeves reaching up to axilla.

Material: ELA 1

Color: Same as sleeve



SLEEVE FASTENING 2

Custom-made

Model Product/Art.No

Model 2
Shoulder flap

Adults A20S2

Children A10S2

Product information:

Elastic strap running under the axilla to hold the sleeve up. Fastening with velcro. Available for all sleeves reaching up to axilla.

Material: ELA 1

Color: Same as sleeve



SLEEVE FASTENING 3

Custom-made

Model Product/Art.No

Model 3
Opposite sleeve

Adults A20S3

Children A10S3

Product information:

Short sleeve for the opposite arm to hold the therapeutic sleeve in place. Recommended when sleeve does not stay put or when treatment is needed in the axilla area. Opposite sleeve with the same pressure as the ordered sleeve. Only by separate request: no pressure on the opposite sleeve. Light pressure on the bolero. Available for all sleeves reaching up to axilla.

Material: Same as sleeve

Color: Same as sleeve

Fastening: Hooks / zipper

Details: Neckline ELA 3

Hemline SIL 1

Edge of op. sleeve ELA 2





GLOVE		
Custom-made		
Model	Product/Art.No	
	Fingertips closed	Fingertips open
Adults	SE203119	SE203118
Children	SE103119	SE103118

Product information:

Anatomical construction between the fingers and in the thumb crotch. Number of dorsal seams in glove may vary due to individual measurements and pressure/compression levels.

Recommended material:	Strong (P91)
Colors available:	All
Fastening:	None / hooks / zipper
Details:	Wrist edging ELA 3

GAUNTLET		
Custom-made		
Model	Product/Art.No	
	Thumb closed	Thumb open
Adults	SE203109	SE203108
Children	SE103109	SE103108

Product information:

Anatomical construction in the thumb crotch.

Recommended material:	Strong (P91)
Colors available:	All
Fastening:	None / hooks / zipper
Details:	Wrist edging ELA 3 Palm edging ELA 2



GLOVE WITH SPLINT POCKET

Standard size

Size	Product/Art.No	
	Right	Left
1	STSE3111R	STSE3111L
2	STSE3112R	STSE3112L
3	STSE3113R	STSE3113L
4	STSE3114R	STSE3114L
5	STSE3115R	STSE3115L
6	STSE3116R	STSE3116L
7	STSE3117R	STSE3117L
8	STSE3118R	STSE3118L
9	STSE3119R	STSE3119L
10	STSE31110R	STSE31110L

GAUNTLET WITH SPLINT POCKET

Standard size

Size	Product/Art.No	
	Right	Left
1	STSE3101R	STSE3101L
2	STSE3102R	STSE3102L
3	STSE3103R	STSE3103L
4	STSE3104R	STSE3104L
5	STSE3105R	STSE3105L
6	STSE3106R	STSE3106L
7	STSE3107R	STSE3107L
8	STSE3108R	STSE3108L
9	STSE3109R	STSE3109L
10	STSE31010R	STSE31010L

CI GLOVE

Standard size

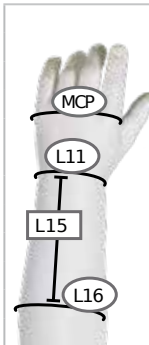
Size	Circumf.*	Product/Art.No	
		Right	Left
1	12 - 13,5	STSE3131R	STSE3131L
2	13,5 - 15	STSE3132R	STSE3132L
3	15 - 16,5	STSE3133R	STSE3133L

Product information:

Used in constrain-included movement therapy, for the healthy hand.
*Circumference at MCP.

Material:	Strong (P91)
Stock color:	Beige
Colors available:	All
Pressure level:	No pressure
Details:	Wrist edging ELA 3

Sizes	Measurements (cm)			
	MCP	L11	L16	L15
1	11	10,5	14	6
2	12	11	14,5	6
3	13	11,5	15,5	8,5
4	14	12	16	8,5
5	15	12,5	16,5	9
6	16	13,5	17	9
7	17	14,5	17,5	10
8	18	16	18,5	11
9	19	16,5	20	11
10	20	17,5	23	12



Product information:

Sense glove (pictures) and gauntlet include a zipper and a pocket for optional splint or other reinforcements. The product is used in different tonus deficiencies or hemiplegia.

Glove with open fingertips. Gauntlet with open thumb tip.

Material:	Strong (P91)
Stock color:	Beige
Colors available:	All
Fastening:	Zipper
Pressure level:	15-21 mmHg
Details:	Wrist edging ELA 3



INTERIM & LIGHT™

INTERIM CARE AND LIGHT PRESSURE GARMENTS

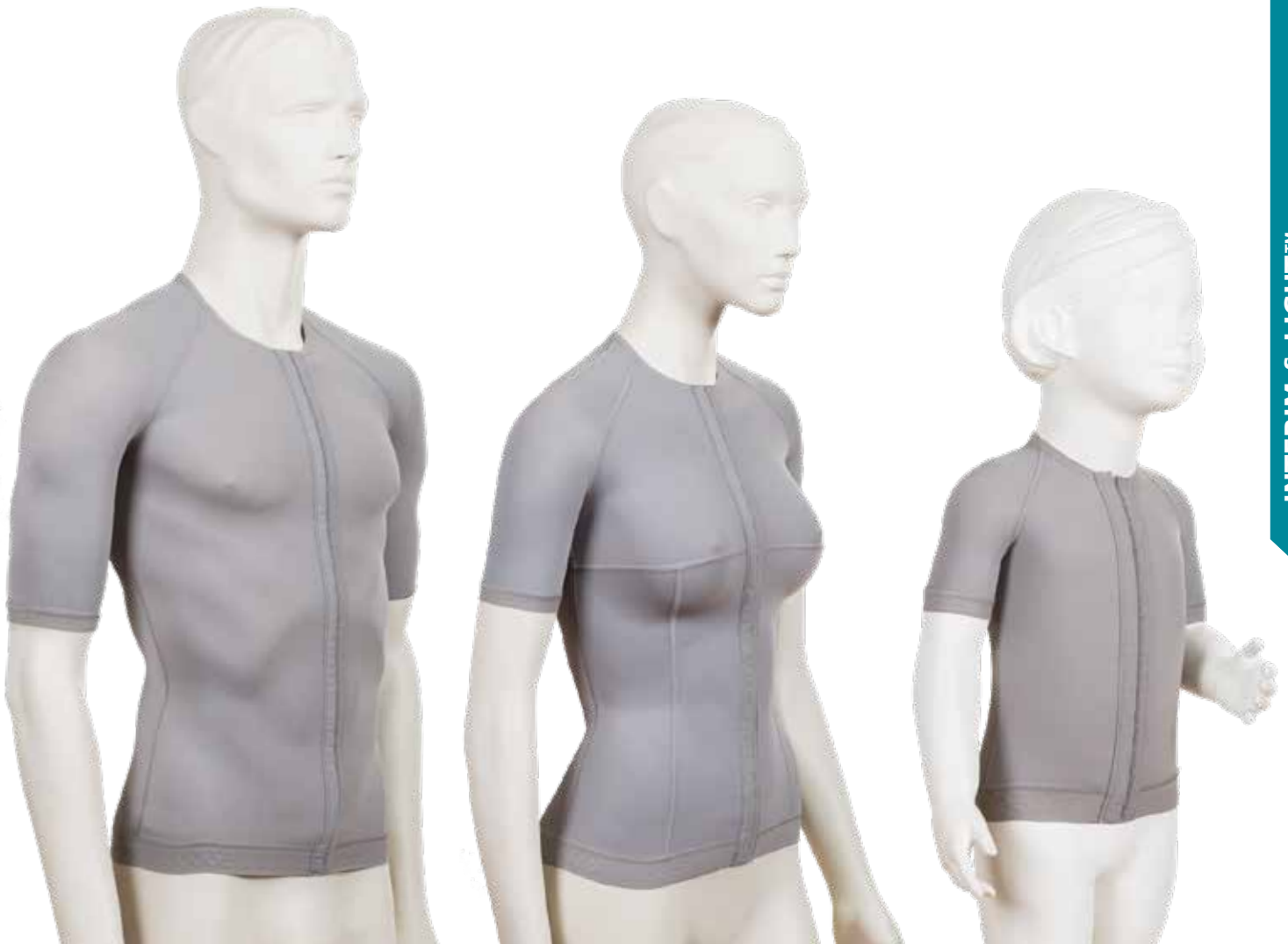


Standard size

Lymed Interim & Light™ garments are standard-sized products with light even pressure. Interim & Light garments are mostly used in the beginning of burn treatment when actual pressure treatment is too early to start due to open wounds or acclimatization to the pressure. Garments can reach theoretical pressure of 10-18 mmHg which is proven to be beneficial in prevention of hypertrophic scars. Pressure level can be slightly affected with the selection of size. Products are intended for short-term use prior to custom-made garments.

Lymed Interim & Light garments also provide an easy alternative to custom-made garments in pain treatment. Pressure garments acts as a stimulation treatment in pain management of e.g. CRPS patients.

To ensure product's safety, Lymed recommends to have a critical approach towards suitability of standard-sized products in client's treatment. According to literature, optimal benefits from pressure treatment cannot be achieved if the garment is too loose. On the other hand, too tight or an ill-fitting product may cause a negative effect. Lymed recommends that garments should be custom-made to sustain optimal pressure without causing tissue damage. The fit of the product should be monitored regularly.



MEN'S VEST

Standard size

Size	Circumf.*	Product/Art.No	
		Short sleeves	Long sleeves
1	81 - 84 cm	STIN224221	STIN224331
2	85 - 88	STIN224222	STIN224332
3	89 - 92	STIN224223	STIN224333
4	93 - 96	STIN224224	STIN224334
5	97 - 100	STIN224225	STIN224335
6	101 - 104	STIN224226	STIN224336
7	105 - 108	STIN224227	STIN224337
8	109 - 112	STIN224228	STIN224338
9	113 - 116	STIN224229	STIN224339
10	117 - 120	STIN2242210	STIN2243310

WOMEN'S VEST

Standard size

Size	Circumf.*	Product/Art.No	
		Short sleeves	Long sleeves
1	76 - 80 cm	STIN214221	STIN214331
2	81 - 84	STIN214222	STIN214332
3	85 - 88	STIN214223	STIN214333
4	89 - 92	STIN214224	STIN214334
5	93 - 96	STIN214225	STIN214335
6	97 - 100	STIN214226	STIN214336
7	101 - 104	STIN214227	STIN214337
8	105 - 108	STIN214228	STIN214338
9	109 - 112	STIN214229	STIN214339
10	113 - 116	STIN2142210	STIN2143310
11	117 - 119	STIN2142211	STIN2143311

CHILDREN'S VEST

Standard size

Size	Circumf.*	Product/Art.No	
		Short sleeves	Long sleeves
1	43 - 45 cm	STIN104221	STIN104331
2	46 - 49	STIN104222	STIN104332
3	50 - 54	STIN104223	STIN104333
4	55 - 59	STIN104224	STIN104334
5	60 - 63	STIN104225	STIN104335
6	64 - 67	STIN104226	STIN104336
7	68 - 71	STIN104227	STIN104337
8	72 - 75	STIN104228	STIN104338
9	76 - 79	STIN104229	STIN104339
10	80 - 83	STIN1042210	STIN1043310

Product information:

Short or long sleeved model with long hemline reaching down to the pelvis.

Women's vest with anatomical breast construction.

*Circumference of chest under axillae, above breasts.

Material:	Light (P50)
Stock color:	Short sleeves: grey Long sleeves: by request
Colors available:	All
Fastening:	Hooks / zipper by request
Pressure level:	10-18 mmHg
Details:	Neckline ELA 3, hemline SIL 1, edge of sleeve ELA 2

LYMED INTERIM & LIGHT™

Interim care and light pressure garments

Standard size

INTERIM & LIGHT™



MEN'S PANTS			
Standard size			
Size	Circumf.*	Product/Art.No	
		Short legs	Long legs
1	87 - 92 cm	STIN225221	STIN225331
2	93 - 96	STIN225222	STIN225332
3	97 - 100	STIN225223	STIN225333
4	101 - 104	STIN225224	STIN225334
5	105 - 108	STIN225225	STIN225335
6	109 - 112	STIN225226	STIN225336
7	113 - 116	STIN225227	STIN225337
8	117 - 120	STIN225228	STIN225338
9	121 - 124	STIN225229	STIN225339
10	125 - 128	STIN2252210	STIN2253310

WOMEN'S PANTS			
Standard size			
Size	Circumf.*	Product/Art.No	
		Short legs	Long legs
1	87 - 91 cm	STIN215221	STIN215331
2	92 - 95	STIN215222	STIN215332
3	96 - 99	STIN215223	STIN215333
4	100 - 103	STIN215224	STIN215334
5	104 - 107	STIN215225	STIN215335
6	108 - 111	STIN215226	STIN215336
7	112 - 115	STIN215227	STIN215337
8	116 - 119	STIN215228	STIN215338
9	120 - 123	STIN215229	STIN215339
10	124 - 127	STIN2152210	STIN2153310

CHILDREN'S PANTS			
Standard size			
Size	Circumf.*	Product/Art.No	
		Short legs	Long legs
1	47 - 50 cm	STIN105221	STIN105331
2	51 - 54	STIN105222	STIN105332
3	55 - 58	STIN105223	STIN105333
4	59 - 61	STIN105224	STIN105334
5	62 - 66	STIN105225	STIN105335
6	67 - 70	STIN105226	STIN105336
7	71 - 74	STIN105227	STIN105337
8	75 - 78	STIN105228	STIN105338
9	79 - 82	STIN105229	STIN105339
10	83 - 86	STIN1052210	STIN1053310

Product information:

Normal waist. Men's models with contouring in the front. *Circumference at widest point of pelvis.

Material:	Light (P50)
Stock color:	Grey
Colors available:	All
Pressure level:	10-18 mmHg
Details:	Waist: ELA 1
	Leg opening ELA 2



ADULT'S GLOVE

Standard size

Size	Circumf.*	Product/Art.No			
		Fingertips closed right	Fingertips closed left	Fingertips open right	Fingertips open left
1	13 - 14 cm	STIN2031191R	STIN2031191L	STIN2031181R	STIN2031181L
2	15 - 16	STIN2031192R	STIN2031192L	STIN2031182R	STIN2031182L
3	17 - 18	STIN2031193R	STIN2031193L	STIN2031183R	STIN2031183L
4	19 - 20	STIN2031194R	STIN2031194L	STIN2031184R	STIN2031184L
5	21 - 22	STIN2031195R	STIN2031195L	STIN2031185R	STIN2031185L
6	23 - 24	STIN2031196R	STIN2031196L	STIN2031186R	STIN2031186L
7	25 - 26	STIN2031197R	STIN2031197L	STIN2031187R	STIN2031187L
8	27 - 28	STIN2031198R	STIN2031198L	STIN2031188R	STIN2031188L

CHILDREN'S GLOVE

Standard size

Size	Circumf.*	Product/Art.No	
		Fingertips closed right	Fingertips closed left
1	10 - 11 cm	STIN1031191R	STIN1031191L
2	12 - 13	STIN1031192R	STIN1031192L
		Fingertips open right	Fingertips open left
1	10 - 11 cm	STIN1031181R	STIN1031181L
2	12 - 13	STIN1031182R	STIN1031182L

Product information:

Anatomical construction between the fingers. *Circumference at MCP.

Material:	Light (P50)
Stock color:	Grey
Colors available:	All
Pressure level:	10-18 mmHg
Details:	Wrist edging ELA 3



ADULT'S SLEEVE

Standard size

Size	Circumf.*	Art.No
1	18 - 20 cm	STIN20301
2	20 - 22	STIN20302
3	22 - 24	STIN20303
4	24 - 26	STIN20304
5	26 - 28	STIN20305
6	28 - 30	STIN20306
7	30 - 32	STIN20307
8	32 - 34	STIN20308
9	34 - 36	STIN20309
10	36 - 38	STIN203010
11	38 - 40	STIN203011

Product information:

Sleeve length in size 6: 43,5 cm.
*Circumference at widest point of upper arm.

Material:	Light (P50)
Stock color:	Grey
Colors available:	All
Pressure level:	10-18 mmHg
Details:	Upper edge SIL 2 Lower edge ELA 2

CHILDREN'S SLEEVE

Standard size

Size	Circumf.*	Art.No
1	10 - 12 cm	STIN10301
2	12 - 14	STIN10302
3	14 - 16	STIN10303
4	16 - 18	STIN10304
5	18 - 20	STIN10305

Product information:

Sleeve length in size 3: 26,5 cm
*Circumference at widest point of upper arm.

Material:	Light (P50)
Stock color:	Grey
Colors available:	All
Pressure level:	10-18 mmHg
Details:	Upper edge SIL 2 Lower edge ELA 3



ADULT'S STOCKING

Standard size

Size	Circumf.*	Shoe size	Product/Art.No
Toes closed			
1	28 - 32 cm	35 - 38 EU	STIN20691
2	33 - 37	38 - 40	STIN20692
3	38 - 42	40 - 43	STIN20693
4	43 - 46	43 - 46	STIN20694
Toes open			
1	28 - 32 cm		STIN20681
2	33 - 37		STIN20682
3	38 - 42		STIN20683
4	43 - 46		STIN20684

Product information:

*Circumference of widest point of calf.

Material:	Light (P50)
Stock color:	Grey
Colors available:	All
Pressure level:	10-18 mmHg
Details:	Upper edge SIL 2
	Edging, tip open ELA 2

CHILDREN'S STOCKING

Standard size

Size	Circumf.*	Shoe size	Product/Art.No
Toes closed			
1	16 - 19 cm	23 - 26 EU	STIN10691
2	20 - 23	26 - 31	STIN10692
3	24 - 27	31 - 36	STIN10693
Toes open			
1	16 - 19 cm		STIN10681
2	20 - 23		STIN10682
3	24 - 27		STIN10683

Product information:

*Circumference of widest point of calf.

Material:	Light (P50)
Stock color:	Grey
Colors available:	All
Pressure level:	10-18 mmHg
Details:	Upper edge SIL 2
	Edging, tip open ELA 2



CHIN STRAP

Standard size

Size	Circumf.*	Art.No
1	47 - 50 cm	STIN1381
2	51 - 53	STIN1382
3	54 - 56	STIN1383
4	57 - 59	STIN1384
5	60 - 62	STIN1385

Product information:

Velcro fastening in the back
*Circumference of the head.

Material:	Light (P50)
Stock color:	Grey
Colors available:	All
Pressure level:	10-18 mmHg
Fastening:	Velcro in the back
Details:	Edges: overlocking stitch



HELMET

Standard size

Size	Circumf.*	Art.No
1	47 - 50 cm	STIN1391
2	51 - 53	STIN1392
3	54 - 56	STIN1393
4	57 - 59	STIN1394
5	60 - 62	STIN1395

Product information:

Face closed.
Openings for eyes, mouth and nose are cut when fitting the product: fit the helmet on and mark the places for openings. Remove the helmet and cut with scissors. Material does not unravel when cut.
*Circumference of the head.

Material:	Light (P50)
Stock color:	Grey
Colors available:	All
Pressure level:	10-18 mmHg
Fastening:	Occipital hooks
Details:	Edges: overlocking stitch



POST-OPERATION™

POST-OPERATIONAL SUPPORT GARMENTS



Standard size

Lymed Post-Operation™ products are standard-sized products which are used in the after care of different surgeries to remove and prevent swelling, bruising and alleviate the pain in the operated area. The compression and pressure treatment supports rehabilitation by helping to regain mobility. Multiple sources indicate that pressure treatment supports healing by removing excess fluids from the area and preventing edema after the surgery. Garments are also used to ensure the attachment of the operated tissue. Common examples of use are aftercare of liposuction and operations of face, breasts or midsection.

To ensure product's safety, Lymed recommends to have a critical approach towards suitability of standard-sized products in client's treatment. According to literature, optimal benefits from pressure treatment cannot be achieved if the garment is too loose. On the other hand, too tight or an ill-fitting product may cause a negative effect. Lymed recommends that garments should be custom-made to sustain optimal pressure without causing tissue damage. The fit of the product should be monitored regularly.



PANTS FOR WOMEN | HIGH WAIST

Standard size

Size	Circumf.*	Product/Art.No	Ankle length	Calf length	Knee length	Short length
	Pelvis (cm)	Thigh (cm)				
XS	86 - 90	50 - 53	STPOP21532HW	STPOP21522HW	STPOP21512HW	STPOP21502HW
S	91 - 95	53,5 - 56	STPOP21533HW	STPOP21523HW	STPOP21513HW	STPOP21503HW
M	96 - 101	56,5 - 59,5	STPOP21534HW	STPOP21524HW	STPOP21514HW	STPOP21504HW
L	102 - 110	60 - 62,5	STPOP21535HW	STPOP21525HW	STPOP21515HW	STPOP21505HW
XL	111 - 121	63 - 66	STPOP21536HW	STPOP21526HW	STPOP21516HW	STPOP21506HW
XXL	122 - 132	66,5 - 69	STPOP21537HW	STPOP21527HW	STPOP21517HW	STPOP21507HW
XXXL	133 - 138	69,5 - 71,5	STPOP21538HW	STPOP21528HW	STPOP21518HW	STPOP21508HW
XXXXL	139 - 144	72 - 74,5	STPOP21539HW	STPOP21529HW	STPOP21519HW	STPOP21509HW

Product information:

Women's pants for post-operational care. Suitable also for recovery after child birth.

High waist and double fabric in midsection. Genital area open or closed. Without choice in the order, product will be delivered with genital area closed.

Adjustable elastane shoulder straps. Non-detachable shoulder straps, clips in the front. Comes with an add-on for connecting the straps at the front.

*Circumference at widest point of pelvis and upper thigh.



UPDATED!

Material:	Medium (P07)
Stock color:	Black
Colors available:	All
Pressure level:	23-30 mmHg
Fastening:	Zipper with hooks on the side of pelvis.
	Shoulder straps
Details:	Waist ELA 3
	Leg opening ELA 2

Ways to wear shoulder straps



PANTS FOR WOMEN | NORMAL WAIST

Standard size

Size	Circumf.*		Product/Art.No		
	Pelvis (cm)	Thigh (cm)	Ankle length	Calf length	Knee length
XS	86 - 90	50 - 53	STPOP21532	STPOP21522	STPOP21512
S	91 - 95	53,5 - 56	STPOP21533	STPOP21523	STPOP21513
M	96 - 101	56,5 - 59,5	STPOP21534	STPOP21524	STPOP21514
L	102 - 110	60 - 62,5	STPOP21535	STPOP21525	STPOP21515
XL	111 - 121	63 - 66	STPOP21536	STPOP21526	STPOP21516
XXL	122 - 132	66,5 - 69	STPOP21537	STPOP21527	STPOP21517
XXXL	133 - 138	69,5 - 71,5	STPOP21538	STPOP21528	STPOP21518
XXXXL	139 - 144	72 - 74,5	STPOP21539	STPOP21529	STPOP21519

Product information:

Women's pants for post-operational care.

Normal waist. Genital area open or closed. Without choice in the order, product will be delivered with genital area closed.

*Circumference at widest point of pelvis and upper thigh.

Material:	Medium (P07)
Stock color:	Black
Colors available:	All
Pressure level:	23-30 mmHg
Fastening:	Zipper with hooks on the side of pelvis (Without zipper by request)
Details:	Waist SIL 1
	Leg opening ELA 2

UPDATED!



VEST FOR MEN Standard size

Size	Circumf.*	Art.No
XXS	80 - 84 cm	STPOP2241
XS	85 - 90	STPOP2242
S	91 - 95	STPOP2243
M	96 - 101	STPOP2244
L	102 - 107	STPOP2245
XL	108 - 113	STPOP2246
XXL	114 - 119	STPOP2247

Product information:

Men's pressure vest for post-operational care and gynecomastia. *Circumference of chest under axillae.	
Material:	Medium (P07)
Stock color:	Black
Colors available:	All
Pressure level:	23-30 mmHg
Fastening:	Hooks at the front
Details:	Hemline SIL 1
	Neckline and armholes ELA 3

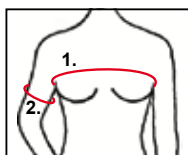


UPDATED!

SLEEVES FOR WOMEN

Standard size

Size	Circumf. 1*	Circumf. 2*	Art.No
XS	76 - 84 cm	24 - 26 cm	STPOP2132
S	85 - 92	26,5 - 28,5	STPOP2133
M	93 - 100	29 - 31	STPOP2134
L	101 - 107	31,5 - 33,5	STPOP2135
XL	108 - 114	34 - 36	STPOP2136
XXL	115 - 124	36,5 - 38,5	STPOP2137



Product information:

Women's pressure sleeves for post-operational care. Anatomical elbow construction.

*Circumference 1 under axillae, above breasts.

*Circumference 2 at widest point of upper arm.

Material: Sleeves: medium (P07)

Bodice: light (P50)

Stock color: Black

Colors available: All

Pressure level: 23-30 mmHg in sleeves

No pressure in torso

Fastening: Hooks at the front

Details: Hemline ELA 1

Neckline ELA 3

Edge of sleeve ELA 2



BRA LIGHT SUPPORT Standard size

Size	Circumf.*	Product/Art.No	Prosthesis pocket, right	Prosthesis pocket, left	Prosthesis pocket, both
XS	70 - 75 cm	STPOP712	STPOP712PR	STPOP712PL	STPOP712PP
S	73 - 78	STPOP713	STPOP713PR	STPOP713PL	STPOP713PP
M	76 - 83	STPOP714	STPOP714PR	STPOP714PL	STPOP714PP
L	81 - 88	STPOP715	STPOP715PR	STPOP715PL	STPOP715PP
XL	86 - 93	STPOP716	STPOP716PR	STPOP716PL	STPOP716PP
XXL	91 - 98	STPOP717	STPOP717PR	STPOP717PL	STPOP717PP

Product information:

Light support bra can be used right after operations to hold the bindings in place. Soft and light material. Adjustable straps, which can be opened, enable treatment and changing of bindings without taking the bra off. Velcro fastening at the back for easier donning. Available with one or two pockets for prosthesis.

*Circumference at the chest below the breasts.

Material:	Light (P50)
Stock color:	Black, white
Colors available:	Black, white, brown
Pressure level:	No pressure
Fastening:	Straps, width 3 cm Velcro at the back, width 7 cm
Details:	Lower end ELA 1 Edging ELA 3



**BRA
MEDIUM SUPPORT**

Standard size

Size	Circumf.*	Product/Art.No	Prosthesis pocket		
			right	left	both
XS	70 - 75 cm	STPOP722	STPOP722PR	STPOP722PL	STPOP722PP
S	73 - 78	STPOP723	STPOP723PR	STPOP723PL	STPOP723PP
M	76 - 83	STPOP724	STPOP724PR	STPOP724PL	STPOP724PP
L	81 - 88	STPOP725	STPOP725PR	STPOP725PL	STPOP725PP
XL	86 - 93	STPOP726	STPOP726PR	STPOP726PL	STPOP726PP
XXL	91 - 98	STPOP727	STPOP727PR	STPOP727PL	STPOP727PP

Product information:

Medium support bra can be used right after operations to hold the bindings in place. Soft, medium material. A bit stronger than the light support bra. Adjustable straps, which can be opened, enable treatment and changing of bindings without taking the bra off. Velcro fastening at the back for easier donning. Available with one or two pockets for prosthesis.

*Circumference at the chest below the breasts.

Material:	Medium (P07)
Stock color:	Black, white
Colors available:	Black, white, brown
Pressure level:	No pressure
Fastening:	Straps, width 3 cm Velcro at the back, width 7 cm
Details:	Lower end ELA 1 Edging ELA 3



**BRA | SHORT
STRONG SUPPORT**

Standard size

Circumf.*	Cup size	Art.No
65 - 69 cm	A / B / C / D / E / F / G	STPOP7365
70 - 74	A / B / C / D / E / F / G	STPOP7370
75 - 79	A / B / C / D / E / F / G	STPOP7375
80 - 84	A / B / C / D / E / F / G	STPOP7380
85 - 89	A / B / C / D / E / F / G	STPOP7385
90 - 94	A / B / C / D / E / F / G	STPOP7390
95 - 99	A / B / C / D / E / F / G	STPOP7395
100 - 104	A / B / C / D / E / F / G	STPOP73100

Product information:

Strong support bra is meant to shape and support the breasts after surgery. Can be also used to hold the bindings in place or as a breastfeeding bra. Stock fastening: hooks at the front and supporting panel at the back. Available with zipper and assistive hooks on request. Without choice in the order, product will be delivered with hooks. Adjustable straps can be opened.

Also available with built-in silicone band above the breasts for aftercare of breast reconstructions (art.no. ASIB).

*Circumference at the chest below the breasts.

Material:	Strong (P91)
Stock color:	Black, white
Colors available:	Black, white, brown
Pressure level:	No pressure
Fastening:	Straps, width 3 cm Hooks in front, zipper only by request
Details:	Lower end ELA 1 Edging ELA 3



**BRA | LONG
STRONG SUPPORT**

Standard size

Circumf.*	Cup size	Art.No
65 - 69 cm	A / B / C / D / E / F / G	STPOP7465
70 - 74	A / B / C / D / E / F / G	STPOP7470
75 - 79	A / B / C / D / E / F / G	STPOP7475
80 - 84	A / B / C / D / E / F / G	STPOP7480
85 - 89	A / B / C / D / E / F / G	STPOP7485
90 - 94	A / B / C / D / E / F / G	STPOP7490
95 - 99	A / B / C / D / E / F / G	STPOP7495
100 - 104	A / B / C / D / E / F / G	STPOP74100

Product information:

Strong support bra is meant to shape and support the breasts after surgery. The long model is suitable especially for women with larger breasts. Can be also used to hold the bindings in place or as a breastfeeding bra. Stock fastening: zipper with assistive hooks at the front and supporting panel at the back. Available with hooks on request. Without choice in the order, product will be delivered with zipper. Adjustable straps can be opened.

Also available with built-in silicone band above the breasts for aftercare of breast reconstructions (art.no. ASIB).

*Circumference at the chest below the breasts.

Material:	Strong (P91)
Stock color:	Black, white
Colors available:	Black, white, brown
Pressure level:	No pressure
Fastening:	Straps, width 3 cm Zipper and assistive hooks, hooks only by request
Details:	Lower end ELA 1 Edging ELA 3



S-SHAPED BREAST WRAP Standard size

Size	Circumf.*	Art.No
XS	60 - 75 cm	STPOP752
S	70 - 90	STPOP753
M	85 - 105	STPOP754

Product information:

S-shape band to support the breasts. Intended to be worn on top of the bra to provide extra support after surgery. Separate band enables the use of the products separately. Fabric on the sides, adjustable velcro fastening at the front and back.

NB: Strong support bra can be ordered with similar built-in silicone band (p.71).

*Circumference above the breasts.

Material:	Strong (P91)
Stock color:	White
Colors available:	White, beige
Pressure level:	Adjustable
Fastening:	Velcro
Details:	Upper and lower edge ELA 3



LIGHT ABDOMINAL BAND Standard size

Prod.length	Height	Art.No
80 cm	7,5 cm	STPOP404180
100	7,5	STPOP4041100
120	7,5	STPOP4041120
140	7,5	STPOP4041140
80	16	STPOP404280
100	16	STPOP4042100
120	16	STPOP4042120
140	16	STPOP4042140

Product information:

See-through material. Adjustable velcro fastening matching the height of the band. Choose band length based on circumference. Narrowest band: choose a shorter band.

Material:	Light support band
Color options:	White, beige
Pressure level:	Adjustable
Fastening:	Velcro

UPDATED!



STRONG ABDOMINAL BAND

Standard size

Prod.length	Height	Art.No
80 cm	16 cm	STPOP403180
100	16	STPOP4031100
120	16	STPOP4031120
140	16	STPOP4031140
80	22	STPOP403280
100	22	STPOP4032100
120	22	STPOP4032120
140	22	STPOP4032140
80	26	STPOP403380
100	26	STPOP4033100
120	26	STPOP4033120
140	26	STPOP4033140

Product information:

Strong elastic support band can be used as a light back support or a light hernia belt. Adjustable velcro fastening matching the height of the band. Choose band length based on circumference. Narrowest band: choose a shorter band.

Material:	Strong support band
Colors available:	Beige
Pressure level:	Adjustable
Fastening:	Velcro

MATERNITY SUPPORT BELT

Standard size

Prod.length	Height	Art.No
110 cm	10 cm	STM4041110

Product information:

Strong elastic band to support the growing belly.

Material:	Strong support band
Colors available:	Beige
Pressure level:	Adjustable
Fastening:	Velcro





FACIAL SUPPORT

Standard size

Size	Circumf.*	Product/Art.No	
		Ear area open	Ear area closed
S	58 - 62 cm	STPOP1113	STPOP1123
M	62 - 66	STPOP1114	STPOP1124
L	66 - 72	STPOP1115	STPOP1125
XL	72 - 76	STPOP1116	STPOP1126

Product information:

Velcro fastenings on the crown of the head and back of the neck. *Circumference from crown to chin.

Material:	Medium (P07)
Stock color:	Beige
Colors available:	All
Pressure level:	Adjustable
Fastening:	Velcro
Details:	Neck strap: ELA 1
	Edging: ELA 3



CHIN STRAP

Standard size

Size	Product/Art.No	
	Narrow neck strap	Wide neck strap
One size	STPOP113	STPOP114

Product information:

Chin strap with wide or narrow neck strap. Narrow neck strap is ELA 1, wide neck strap is medium support band.

Material:	Light support band and ELA 1
Colors available:	Beige
Pressure level:	Adjustable
Fastening:	Velcro, 3 parts



STRONG CHIN STRAP

Standard size

Size Art.No

One size STPOP115

Product information:

Consists of several bands with adjustable velcro fastenings.

Material: Facial support band

Stock color: White

Colors available: White, Beige

Pressure level: Adjustable

Fastening: Velcro



HELMET FOR HAIR TRANSPLANT OPERATIONS

Standard size

Size Circumf.* Art.No

S 50-54 cm STPOP1393

M 54-58 STPOP1394

Product information:

Can be used to stabilize hair transplants and bandages.
*Circumference of the head.

Material: Light (P50)

Colors available: Black

Pressure level: No pressure

Fastening: Velcro below the chin



WELL-BEING™

PRESSURE GARMENTS FOR WELLNESS AND HEALTH



Custom-made

Lymed Well-being™ products increase body awareness, help to reduce tension, pain and incorrect posture. The products are made for everyday use and do not restrict mobility.

Pressure garments strengthen messages transmitted by our receptors to our brains: an active information path means that muscles activate better, too, giving the body continuous information and instructions to seek itself to a more natural position, thus improving the quality of our movement. Lymed Well-being products also support metabolism and prevent fluid accumulation.

Lymed Well-being products are different from other posture products by being custom-made: that guarantees products' fit and functionality.



CONTROL POSTURE SHIRT Custom-made

Model	Product/Art.No
	Long sleeves
Women	WB21433
Men	WB22433

Product information:

Adult's long-sleeved posture shirt guides the body to position itself naturally and reminds its user to seek better posture. This is achieved by muscle activation and by strengthening the body's deep sensory input. Pressure shirt is used for developing a better posture, prevention of problems and muscle activation in work, free-time and during exercise. The product activates the upper body and removes excess fluid from the body.

Combination of even pressure and light compression. The product is used as underwear. Long-sleeved shirt with anatomical elbow constructions. Women's vest with anatomical breast construction.

Material:	Medium (P07)
Colors available:	All, no seam color choices
Pressure level:	10-18 mmHg, Ccl A
Fastening:	None
Details:	Hemline SIL 1
	Neckline ELA 3
	Edge of sleeve ELA 2



SPORT™

PRESSURE GARMENTS FOR SPORT

Custom-made



Lymed Sport™ products are designed for active use and they have an urban, sleek visual style. Lymed Sport products can help the athlete reap all benefits of medical pressure and compression. All products in the product group are individually manufactured.

Lymed Active™ products are made for versatile use; either during or after performance. Active products combine progressive and even pressure to maximize the effects of medical pressure on the body. Active products are diverse to wear: they increase muscle control, remove excessive fluids and prevent tissue edema.

Recovery™ pants are only designed to enhance recovery right after strenuous performance. Recovery pants have a higher medical compression than Active products, and their sole purpose is to speed up metabolism, remove fluids and prevent edema building up in the muscles. Design and material choices in Recovery products are hand-picked to rev up the recovery process, thus making the products incompatible for all-round active use.

Our specialty in Lymed Sport is to design individual product solutions to para-athletes world wide.



ACTIVE OVERALL Custom-made

Model	Product/Art.No	
	Long sleeves and legs	Short sleeves and legs
Women	SPA21453333	SPA21452222
Men	SPA22453333	SPA22452222
Addition*		
	Hamstring reinforcement	Thigh reinforcement
Right	SPATBR	SPATFR
Left	SPATBL	SPATFL

*Both thigh and hamstring reinforcements will not be manufactured for one product at the same time.

Product information:

Active overall for recovery after performance or to be used during performance. The product activates the whole body, removes excess fluid from the body and prevents edema. Additional hamstring or thigh reinforcements available for increased muscle activation. Overall combines two different compression classes.

Available with long sleeves and legs or with short sleeves and legs. Long-sleeved shirt with anatomical elbow constructions. Women's overall with anatomical breast construction.

Material:	Medium (P07)
Colors available:	All and additional neon seams
Pressure level:	Combined ccl 1 and ccl 2
Fastening:	Zipper
Details:	Neckline ELA 3, edge of sleeve and leg ELA 2



ACTIVE VEST

Custom-made

Model	Product/Art.No	
	Long sleeves	Short sleeves
Women	SPA21433	SPA21422
Men	SPA22433	SPA22422

Product information:

Active vest for recovery after performance or to be used during performance. The product activates the upper body, removes excess fluid from the body and prevents edema.

Available with long or short sleeves. Long-sleeved shirt with anatomical elbow constructions. Women's vest with anatomical breast construction.

Material:	Medium (P07)
Colors available:	All and additional neon seams
Pressure level:	Ccl 1
Fastening:	None / zipper
Details:	Neckline ELA 3
	Edge of sleeve ELA 2
	Lower edge SIL 1



ACTIVE PANTS Custom-made

Model	Product/Art.No	
	Long legs	Short legs
Women	SPA21533	SPA21522
Men	SPA22533	SPA22522

Addition*		
	Hamstring reinforcement	Thigh reinforcement
Right	SPATBR	SPATFR
Left	SPATBL	SPATFL

*Both thigh and hamstring reinforcements will not be manufactured for one product at the same time.

Product information:

Active pants for recovery after performance or to be used during performance. The product activates the lower body, removes excess fluid from the body and prevents edema. Additional hamstring or thigh reinforcements available for increased muscle activation.

Available with long or short legs. Anatomical construction at the knee and ankle. Men's models with contouring at the front.

Material:	Medium (P07)
Colors available:	All and additional neon seams
Pressure level:	Ccl II
Fastening:	None
Details:	Integrated waistband, 6cm wide Leg opening ELA 2



ACTIVE LEG		Custom-made
Model	Product/Art.No	
	Ankle-knee Fortificated achilles' heel	
Unisex	SPA20601	

Product information:

Active leg for recovery after performance or to be used during performance.

Fortification on Achilles' heel (P91).

Material:	Medium (P07)
	Fortification: strong (P91)
Colors available:	All and additional neon seams
Pressure level:	Ccl II
Fastening:	None
Details:	Upper edge SIL 1 Lower edge ELA 2

ACTIVE SOCK		Custom-made
Model	Product/Art.No	
	Knee-high Fortificated achilles' heel	
Unisex	SPA20629	

Product information:

Active sock for recovery after performance or to be used during performance.

Achilles' heel and foot fortifications (P91), anatomical ankle construction.

Material:	Medium (P07)
	Fortifications: strong (P91)
Colors available:	All and additional neon seams
Pressure level:	Ccl II
Fastening:	None
Details:	Upper edge SIL 1



ACTIVE SLEEVE		Custom-made
Model	Product/Art.No	
	Wrist-elbow	Wrist-axilla
Unisex	SPA20301	SPA20303

Product information:

Active sleeve for recovery after performance or to be used during performance.

Wrist-elbow lenght with anatomical elbow constructions.

Material:	Medium (P07)
Colors available:	All and additional neon seams
Pressure level:	Ccl II
Fastening:	None
Details:	Upper edge SIL 1 Lower edge ELA 2



RECOVERY PANTS

Custom-made

Model	Product/Art.No
	Long legs
Women	SPR21533
Men	SPR22533

Product information:

Recovery pants for maximizing recovery. Designed to be used after performance. Strong compression boosts the metabolism, removes excess fluid from the lower body and prevents edema.

Available with long legs. Anatomical construction at the knee. Men's models with contouring at the front.

Material:	Strong (P91)
Colors available:	All and additional neon seams
Pressure level:	Ccl II+
Fastening:	None
Details:	Integrated waistband, 6cm wide Leg opening ELA 2







LYMED[®]

Manufacturer:

Lymed Oy

**Pyhäjärvenkatu 5 A , 33200 Tampere
Finland**

Tel. +358 20 779 2233

info@lymed.fi

Distributors worldwide:

www.lymed.fi